

D Special Vacuum Grippers

Special Vacuum Grippers

Products Overview



Special Vacuum Grippers

333 SLG Series

Magnetic Gripper

- ◇ Dia.: 20~50mm
- ◇ Air supply pressure range: 3.5~6.0bar



METAL SHEET



343 SLB Series

Thin Lip Flow Gripper

- ◇ Vacuum level: 4.5~16kPa
- ◇ Vacuum flow: 680~1,315NL/min



ELECTRONICS



NEW ENERGY



POROUS



336 SNC Series

Needle Gripper

- ◇ QTY of Needle: 4 10
- ◇ Air supply pressure range: 4.0~6.0bar



COMPOSITE MATERIAL



FABRIC MATERIAL



347 SLW Series

Wafer Gripper

- ◇ Vacuum level: 4.5~11kPa
- ◇ Vacuum flow: 330~490NL/min



NEW ENERGY



COMPOSITE MATERIAL



POROUS



338 SNT Series

Non-contact Suction Cup

- ◇ Dia.: 20~120mm
- ◇ Suction force: 2~89N



COMPOSITE MATERIAL



POROUS



351 SLF Series

Matrix Gripper

- ◇ Size: 140×140 180×180
- ◇ Vacuum source: external blower, external vacuum generator, built-in vacuum generator



ELECTRONICS



POROUS



340 SLP Series

Flow Gripper

- ◇ Vacuum level: 4.5~11kPa
- ◇ Vacuum flow: 320~1,195NL/min



NEW ENERGY



BATTERY



COMPOSITE MATERIAL



POROUS



SLG Series

Magnetic Gripper

AIRBEST



Features

- ◇ Gripping by magnetic force
- ◇ Permanent magnet for safe gripping
- ◇ Different connection thread for option
- ◇ No need of electric power

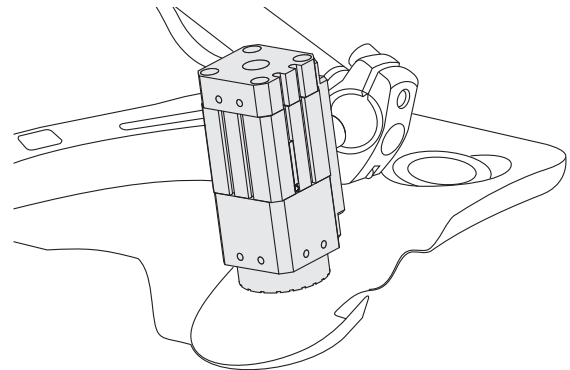
Advantages

- ◇ Compact size, light weight, easy to install
- ◇ Solid and durable
- ◇ Anti-skid ring could be easily replaced



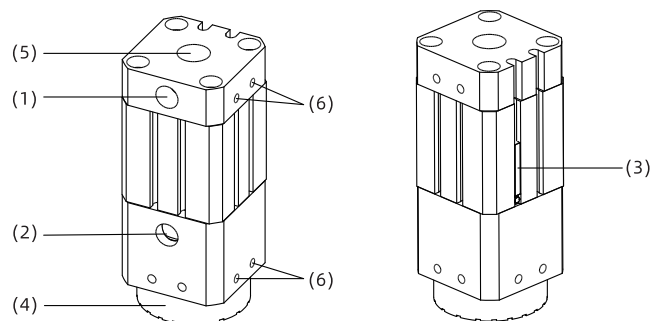
Application

- ◇ Suitable for handling ferromagnetic workpieces
- ◇ Suitable for handling perforated sheet metal, complex laser cutting workpieces



Structure

- ◇ (1) Air supply port (grip)
- ◇ (2) Air supply port (release)
- ◇ (3) The magnetic switch
- ◇ (4) Anti-skid ring
- ◇ (5) Center threaded mounting hole
- ◇ (6) Side threaded mounting hole



SLG Series

Magnetic Gripper



How to order

SLG 40 - H - G1F
 ① ② ③ ④

① Series	② Dimension	③ Special type	④ Connection thread
SLG	20 - ϕ 20mm 30 - ϕ 30mm 40 - ϕ 40mm 50 - ϕ 50mm	Nil - Normal type H - High temp. resistance	G1F - G1/8 female thread G2F - G1/4 female thread

Selection

Model	Dia.of suction cup	Special type		Connection thread	
		Nil	H	G1F	G2F
SLG	20	●	-	●	-
	30	●	●	●	-
	40	●	●	-	●
	50	●	●	-	●

◇ Note: H (high temp. resistance type) cannot select magnetic switch

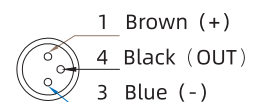
Technical parameters

Model	Air supply pressure range bar	Working temperature °C	Contact temperature °C	Max. holding force N	Lateral force		Weight g
					Non oily N	Oily N	
SLG20	3.5~6.0	5~70	≤70	17	8	8	90
SLG30	3.5~6.0	5~70	≤70	85	32	23	223
SLG40	3.5~6.0	5~70	≤70	220	81	56	427
SLG50	3.5~6.0	5~70	≤70	380	105	65	795
SLG30-H	3.5~6.0	≤150	≤350	115	-	-	220
SLG40-H	3.5~6.0	≤150	≤350	280	-	-	423
SLG50-H	3.5~6.0	≤150	≤350	500	-	-	790

Model	ZPDM-N	ZPDM-P
Wiring diagram		
Wiring	3 wires	
Switch	Electronic type contactless, NO type	
Output contact type	Contactless, NPN	Contactless, PNP
Voltage range	5~30V DC	
Max. switch current	80mA max.	



M8 male connection type



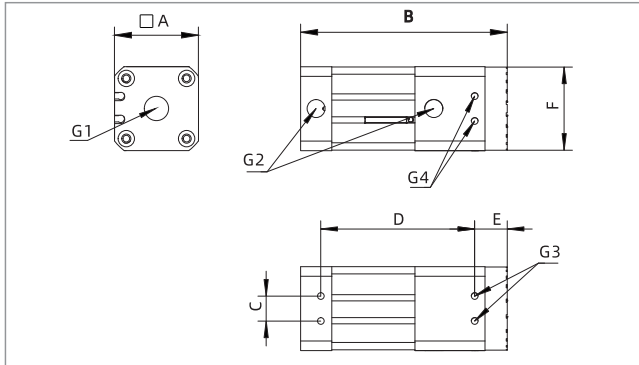
Model	Output mode	Connection type
ZPDM-N	1NPN	Outlet wire connection
ZPDM-P	1PNP	Outlet wire connection
ZPDM-N-M8	1NPN	M8 male connection
ZPDM-P-M8	1PNP	M8 male connection

SLG Series

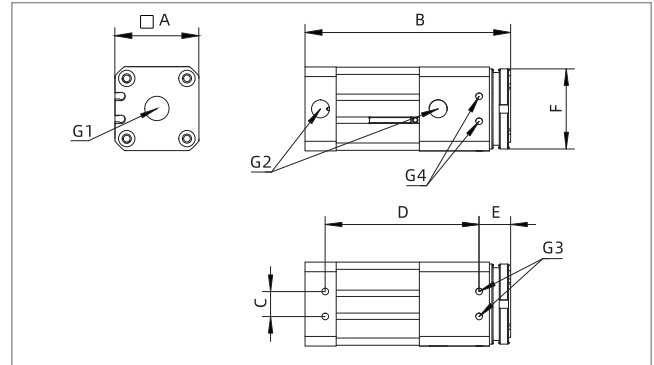
Magnetic Gripper



Dimensions(mm)



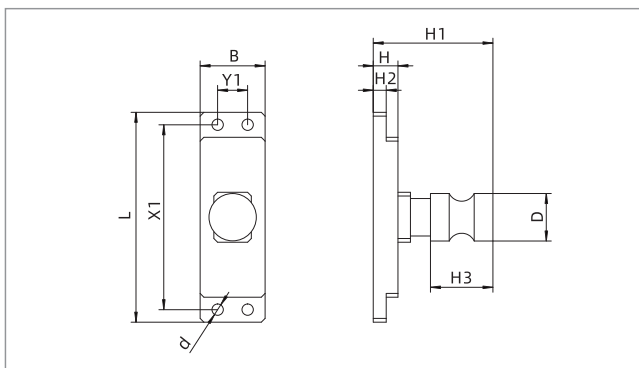
SLG Normal type



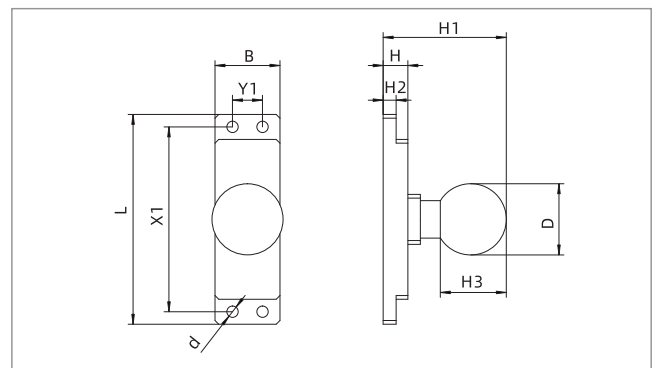
SLG-H High temperature resistance

Model/Size	A	B	C	D	E	F	G1	G2	G3	G4
SLG20	20	78.2	6.5	55	13.2	20	G1/8	M5	M3	M3
SLG30	30	99.4	12	74	15.7	30	G1/8	G1/8	M4	M4
SLG30-H	30	99.2	12	74	15.5	26.9	G1/8	G1/8	M4	M4
SLG40	40	99.4	12	74	15.7	40	G1/4	G1/8	M4	M4
SLG40-H	40	99.2	12	74	15.5	38.4	G1/4	G1/8	M4	M4
SLG50	50	123.4	15	100	15.7	50	G1/4	G1/8	M5	M4
SLG50-H	50	123.2	15	100	15.5	48.4	G1/4	G1/8	M5	M4

Mounting brackets(mm)



A-Columnar bracket



B-Spherical bracket

Model/Size	L	B	H1	D	H3	H2	H	X1	Y1	d
SLG20-A	63	15	50	19	25	5.2	9.9	55	6.5	3.4
SLG20-B	63	15	49.3	28.5	26.4	5.2	9.9	55	6.5	3.4
SLG30/40-A	84	26	50	19	25	5.2	9.9	74	12	4.6
SLG30/40-B	84	26	49.3	28.5	26.4	5.2	9.9	74	12	4.6
SLG50-A	110	30	50	19	25	5.2	9.9	100	15	5.5
SLG50-B	110	29	49.3	28.5	26.4	5.2	9.9	100	15	5.5

SNC Series

Needle Gripper



COMPOSITE MATERIAL



FABRIC

Features

- ◇ Handling the workpieces by needles
- ◇ Needles controlled by spring or double -acting pneumatic cylinder
- ◇ Designed with intersecting needles
- ◇ Adjustable needle stroke
- ◇ Reduce the effective contact area

Advantages

- ◇ Suitable for handling small size workpieces
- ◇ Simple pneumatic valve, easy to control
- ◇ Short work cycle, speed up the process
- ◇ For handling narrow and long or irregular workpieces
- ◇ The workpiece can be prevented from falling even in the case of power failure
- ◇ Preset separately according to the thickness, size and shape of workpieces
- ◇ Reliable handling of high porous workpieces

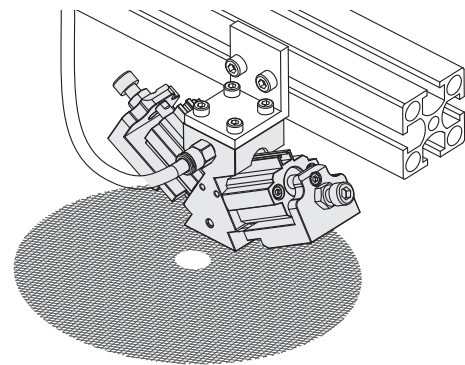


Application

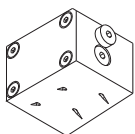
- ◇ Needles with different dimensions, fixed or adjustable needle stroke is optional, to handle non-rigid or high porous material, which is hardly gripped by vacuum, such as composite material, fluffy fabric, filter material, woven FRP, carbon fiber, insulation and foam material, etc.

Notice

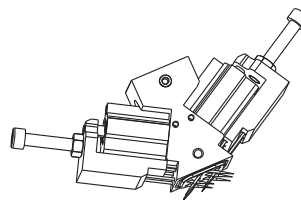
- ◇ Be careful when taking the needle gripper, there are needles at the bottom
- ◇ The exhaust function must be reserved when the solenoid valve controls the air circuit in order to prevent abnormal temperature during high frequency action



Structure



- ◇ Solid aluminum housing
- ◇ 4pcs needles, insertion angle 30°
- ◇ Needles are controlled by compressed air



- ◇ Solid aluminum housing
- ◇ 10pcs needles, insertion angle 30°
- ◇ Double-acting pneumatic cylinder drive
- ◇ Continuous variable stroke adjustment

SNC Series

Needle Gripper



How to order

SNC 10

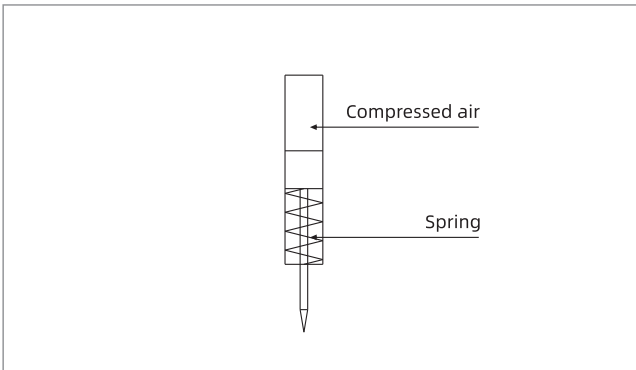
① ②

① Series	② Needle specification
SNC	4 - 4×φ0.8mm 10 - 10×φ1.2mm

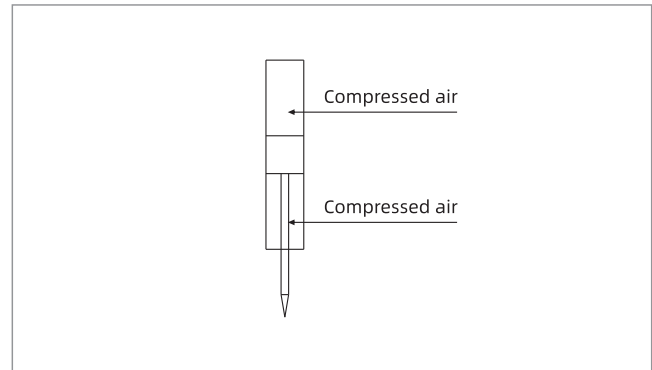
Technical parameters

Model	QTY of Needle PCS	Needle dia. mm	Air supply pressure range bar	Rated air supply pressure bar	Air consumption NL/min	Stroke mm	Working temperature °C	Weight g
SNC4	4	φ0.8	4.0~6.0	4.0	55	3	5~60	85
SNC10	10	φ1.2	4.0~6.0	4.0	65	7	5~60	310

Air circuit schematic diagram

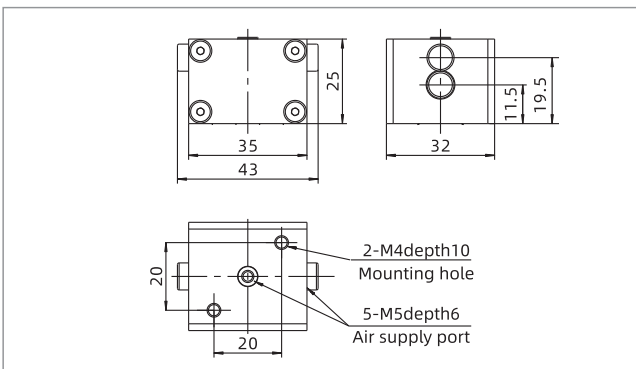


SNC4

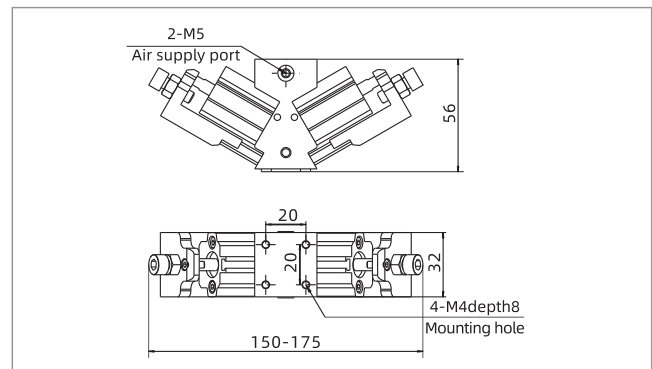


SNC10

Dimensions(mm)



SNC4



SNC10

SNT Series

Non-contact Suction Cup



COMPOSITE MATERIAL



POROUS

Features

- ◇ The suction cup "floats" on the air cushion during the gripping
- ◇ Low vacuum level, large vacuum flow
- ◇ Vacuum created based on Bernoulli principle
- ◇ No air go through the workpiece

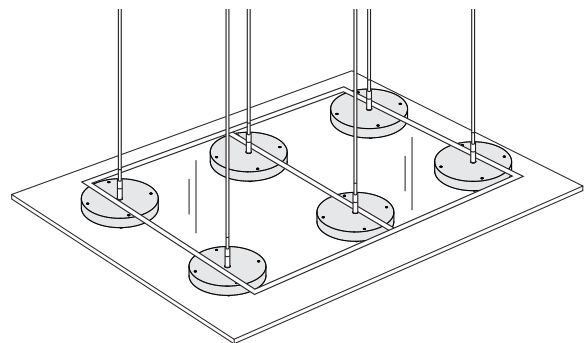
Advantages

- ◇ To achieve non-contact handling of workpiece
- ◇ Good compensation of air leakage
- ◇ Safely separates thin and porous workpiece
- ◇ Connect to compressed air directly, no need extra vacuum generator



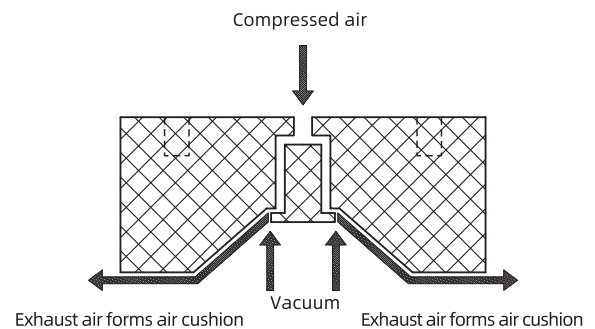
Application

- ◇ Fragile workpieces, such as silicon wafer, solar cell
- ◇ Porous workpieces, such as printed PCB, PVC board, textile
- ◇ Thin and light workpieces, such as plastic film, paper



Structure

- ◇ There are 4 threaded holes on the top
- ◇ Air supply ports on both vertical and horizontal side



SNT Series

Non-contact Suction Cup



How to order

SNT 20 - S N
 ① ② ③ ④

① Series	② Diameter	③ Flow type	④ Cushion material
SNT	20 - ϕ 20mm	60 - ϕ 60mm	S - Standard flow N - NBR PK - PEEK (Mark free)
	30 - ϕ 30mm	100 - ϕ 100mm	
	40 - ϕ 40mm	120 - ϕ 120mm	

Selection

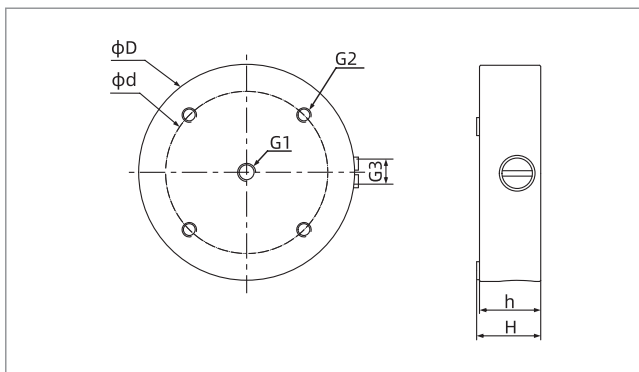
Model/Diameter 20	30	40	60	100	120
SNT20-SN	SNT30-SN	SNT40-SN	SNT60-SN	SNT100-SN	SNT120-SN
SNT20-SPK	SNT30-SPK	SNT40-SPK	SNT60-SPK	SNT100-SPK	SNT120-SPK

Technical parameters

Model	Pull-out force N	Air supply pressure bar	Max. air consumption NL/min	Working temperature °C	Weight g	Recommended hose dia. mm
SNT20	2	5.0	80	0~60	9.5	6
SNT30	4	5.0	100	0~60	32	8
SNT40	6.5	5.0	130	0~60	51	8
SNT60	13	5.0	200	0~60	116	8
SNT100	46	5.0	350	0~60	252	8
SNT120	89	5.0	420	0~60	365	8

◇ Note: The tested workpiece is rigid and airtight, air supply pressure range is 1.0 - 6.0bar, vertical action. The specified pull-out force does not include the safety factor

Dimensions(mm)

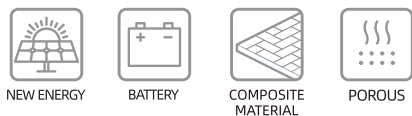


Model/Size	D	d	H	h	G1	G2	G3
SNT20	20	15	12.8	12	M5x0.8	4-M3depth5	-
SNT30	32	22	17.8	17	M5x0.8	4-M4depth6	M5x0.8
SNT40	40	32	17.8	17	G1/8	4-M4depth6	G1/8
SNT60	60	45	17.8	17	G1/8	4-M4depth6	G1/8
SNT100	100	75	17.8	17	G1/8	4-M4depth6	G1/8
SNT120	120	105	17.8	17	G1/8	4-M4depth6	G1/8

SNT

SLP Series

Flow Gripper



Features

- ◇ Large vacuum flow
- ◇ Integrated with vacuum generator, suction cup and silencer
- ◇ Vertical and horizontal mounting types
- ◇ Holes on the adsorbing surface, could avoid the deformation of workpiece

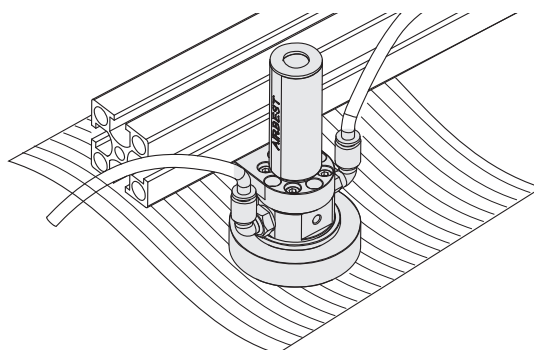
Advantages

- ◇ Flat suction cup to prevent deformation of the workpiece
- ◇ Large vacuum flow, suitable for handling porous workpieces
- ◇ Easy to install, different choice for different application
- ◇ Simple structure, integrated design, connect to compressed air directly, no need extra vacuum generator



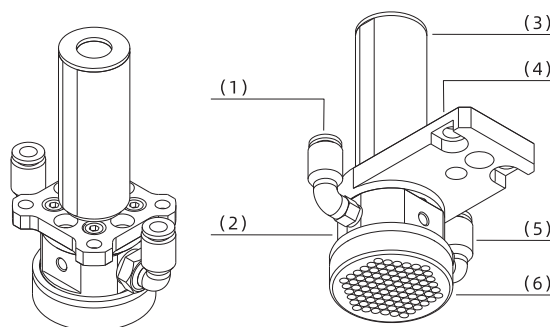
Application

- ◇ Suitable for handling thin and fragile workpieces, such as mobile phone screen, aluminum foil
- ◇ Suitable for handling porous workpieces, such as printed PCB, PVC board
- ◇ Suitable for textile industry, such as fiber sheet



Structure

- ◇ (1) Release/Vacuum detecting port
- ◇ (2) Vacuum generator
- ◇ (3) Silencer
- ◇ (4) Mounting flange
- ◇ (5) Air supply port
- ◇ (6) Adsorbing surface



SLP Series

Flow Gripper



How to order

SLP 40 - M10 S D - F1
 ① ② ③ ④ ⑤ ⑥

① Series	② Dia. of suction cup	③ Specification of vacuum generator	④ Exhaust direction	⑤ Release function	⑥ Mounting flange
SLP	40 - ϕ 40 60 - ϕ 60	M10 - Diameter ϕ 10mm M20 - Diameter ϕ 20mm	S - Vertical + silencer	D - With release port	F1 - Vertical, 55x6mm F2 - Vertical, 84x9mm F3 - Horizontal, 71x9mm F4 - Horizontal, 95x9mm

Selection

Model/ Diameter of suction cup	40	60
SLP40-M10SD-F1		SLP60-M10SD-F1
SLP40-M10SD-F3		SLP60-M10SD-F3
-		SLP60-M20SD-F2
-		SLP60-M20SD-F4

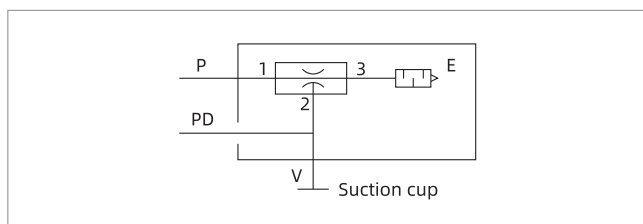
Technical parameters

Model	Air supply pressure range bar	Rated air supply pressure bar	Max. vacuum level -kPa	Max. vacuum flow NL/min	Air consumption NL/min	Working temperature °C
SLP40-M10	1.0~7.0	5.0	11	320~450	145	0~60
SLP60-M10	1.0~7.0	5.0	11	330~550	145	0~60
SLP60-M20	1.0~7.0	5.0	4.5	970~1,195	260	0~60

Vacuum flow(NL/min) at different vacuum levels (-kPa)

Model	Air supply pressure bar	Air consumption NL/min	0	1.5	2.5	3.5	4.5	5.5	6.5	7.5	11	Max. vacuum level -kPa
SLP40-M10	5.0	145	450	430	410	420	350	300	250	170	100	11
SLP60-M10	5.0	145	550	530	470	420	350	300	250	170	100	11
SLP60-M20	5.0	260	1,195	1,120	1,050	980	880	-	-	-	-	4.5

Air circuit schematic diagram



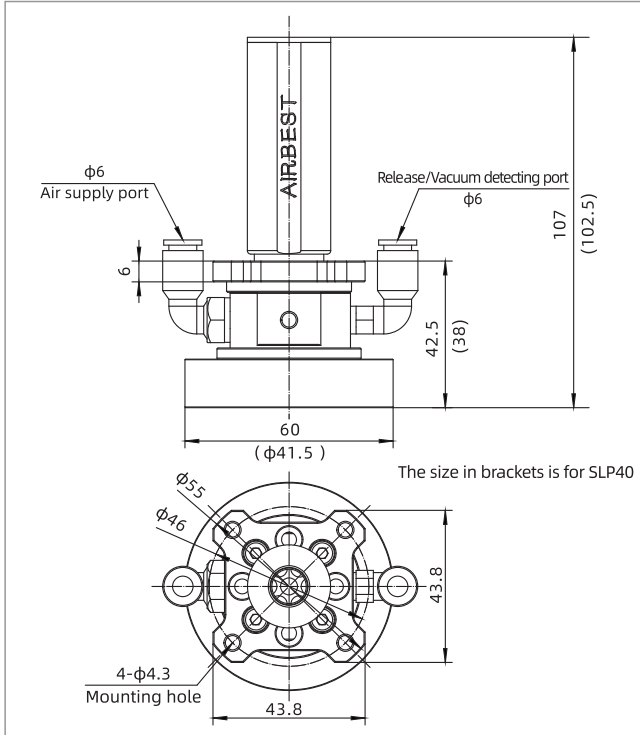
SLP

SLP Series

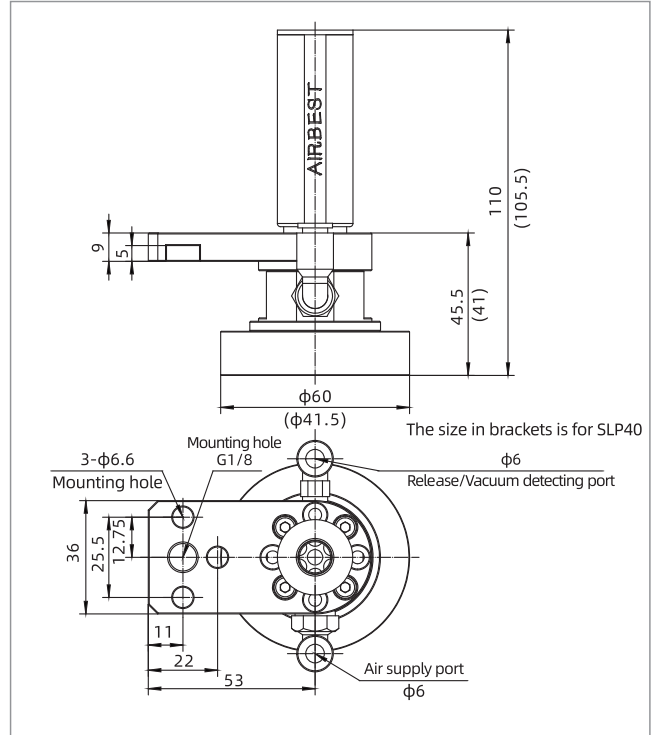
Flow Gripper



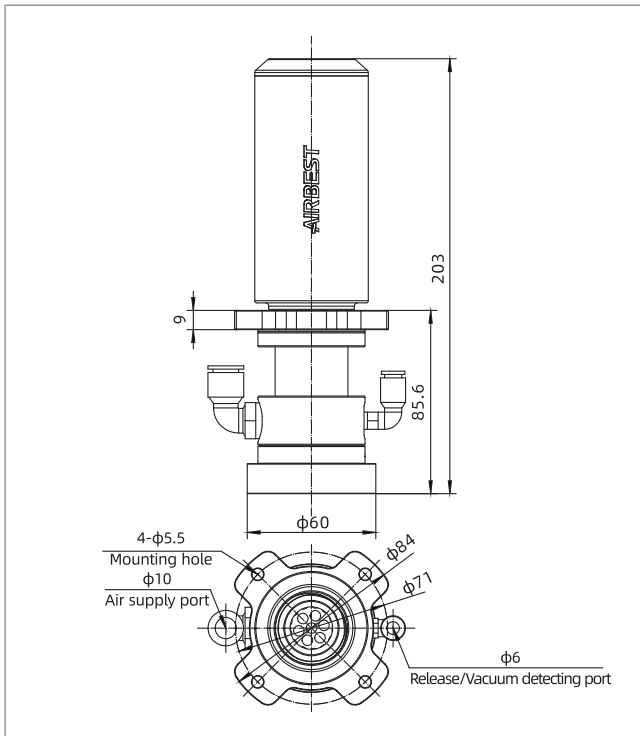
Dimensions(mm)



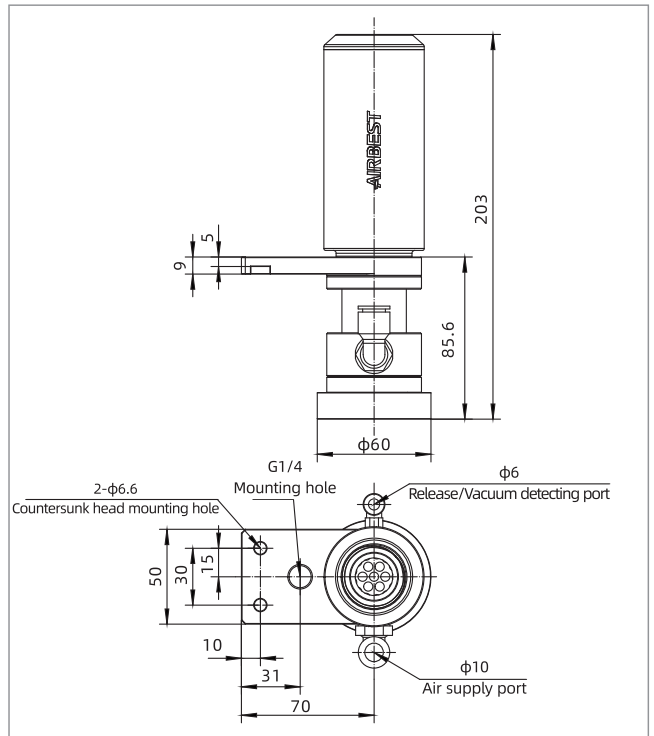
SLP60(40)-M10SD-F1



SLP60(40)-M10SD-F3



SPL60-M20SD-F2



SPL60-M20SD-F4

SLB Series

Thin Lip Flow Gripper



ELECTRONICS NEW ENERGY POROUS

Features

- ◇ Large vacuum flow
- ◇ Integrated with vacuum generator, suction cup, silencer/pagoda fitting
- ◇ Vertical and horizontal mounting types
- ◇ Suction cup with rubber material, flexible, high suction force, protect the surface of workpiece

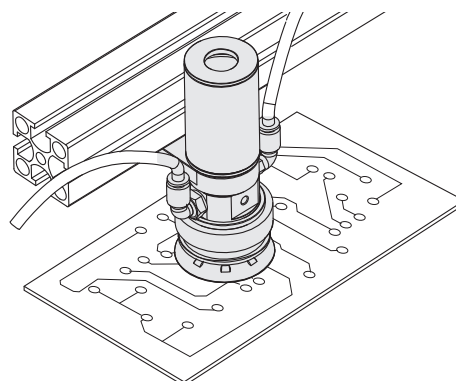
Advantages

- ◇ Flexible gripping, prevent damage to the workpiece during handling
- ◇ Large vacuum flow, suitable for handling porous workpiece
- ◇ Easy to install, different types for option
- ◇ Simple structure, integrated design, could connect to compressed air directly, no need extra vacuum generator
- ◇ Minimize noise, pagoda fitting could be used to collect the exhausted air, no pollution



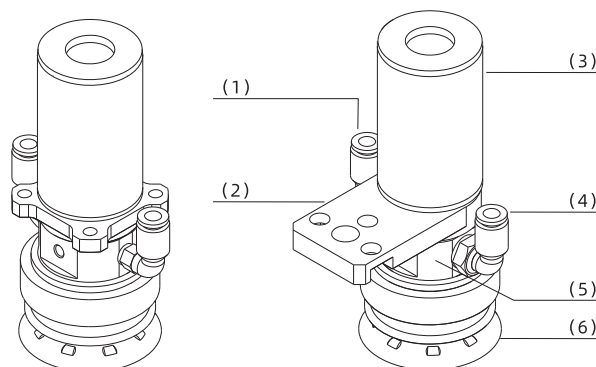
Application

- ◇ Suitable for handling porous workpieces, such as printed PCB, PVC board
- ◇ Suitable for food industry, such as biscuit, bread, etc.
- ◇ Suitable for handling irregular workpieces



Structure

- ◇ (1) Release/Vacuum detecting port
- ◇ (2) Mounting flange
- ◇ (3) Silencer
- ◇ (4) Air supply port
- ◇ (5) Vacuum generator
- ◇ (6) Adsorbing surface



SLB Series

Thin Lip Flow Gripper

How to order

SLB 50 E - M10 S D - F13
 ① ② ③ ④ ⑤ ⑥ ⑦

① Series	② Dia. of suction cup	③ Material of suction cup	④ Specification of vacuum generator
SLB	30 - ϕ 30mm	WS - White silicone 50	M10 - Diameter ϕ 10mm
	50 - ϕ 50mm	E - EPDM 55	M20 - Diameter ϕ 20mm
⑤ Exhaust direction		⑥ Vacuum release function	⑦ Mounting flange
S - Vertical + silencer		D - With vacuum release port	F2 - Vertical, 84x9mm
T - Vertical + pagoda fitting			F4 - Horizontal, 95x9mm
			F11 - Horizontal, 71x9mm
			F13 - Vertical, 55x6mm

Selection

Model/ Diameter of suction cup	30	50
SLB30E-M10SD-F11		SLB50E-M10SD-F11 SLB50WS-M10SD-F11
SLB30E-M10SD-F13		SLB50E-M10SD-F13 SLB50WS-M10SD-F13
SLB30E-M10TD-F11		SLB50E-M10TD-F11 SLB50WS-M10TD-F11
SLB30E-M10TD-F13		SLB50E-M10TD-F13 SLB50WS-M10TD-F13
-		SLB50E-M20SD-F2 SLB50WS-M20SD-F2
-		SLB50E-M20SD-F4 SLB50WS-M20SD-F4

Technical parameters

Model	Air supply pressure range bar	Rated air supply pressure bar	Max. vacuum level -kPa	Max. vacuum flow NL/min	Air consumption NL/min	Working temperature °C
SLB30-M10	1.0~7.0	5.0	16	680~690	165	0~60
SLB50-M10	1.0~7.0	5.0	16	680~690	165	0~60
SLB50-M20	1.0~7.0	5.0	4.5	1,070~1,315	260	0~60

Vacuum flow (NL/min) at different vacuum levels (-kPa)

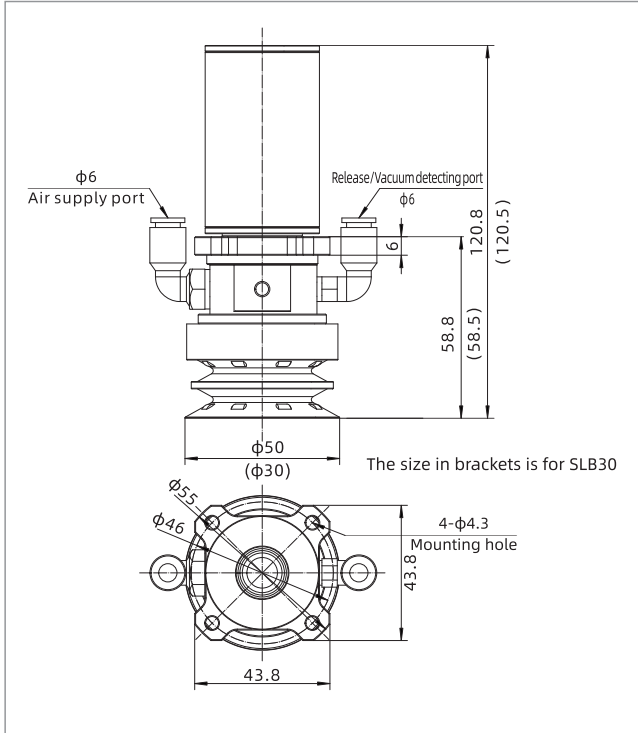
Model	Air supply pressure bar	Air consumption NL/min	Max. vacuum level -kPa									
			0	1.5	2.5	3.5	4.5	5.5	6.5	7.5	11	
SLB30-M10	5.0	165	550	530	470	420	350	300	250	170	100	16
SLB50-M10	5.0	165	550	530	470	420	350	300	250	170	100	16
SLB50-M20	5.0	260	1,315	1,120	1,050	980	880	-	-	-	-	4.5

SLB Series

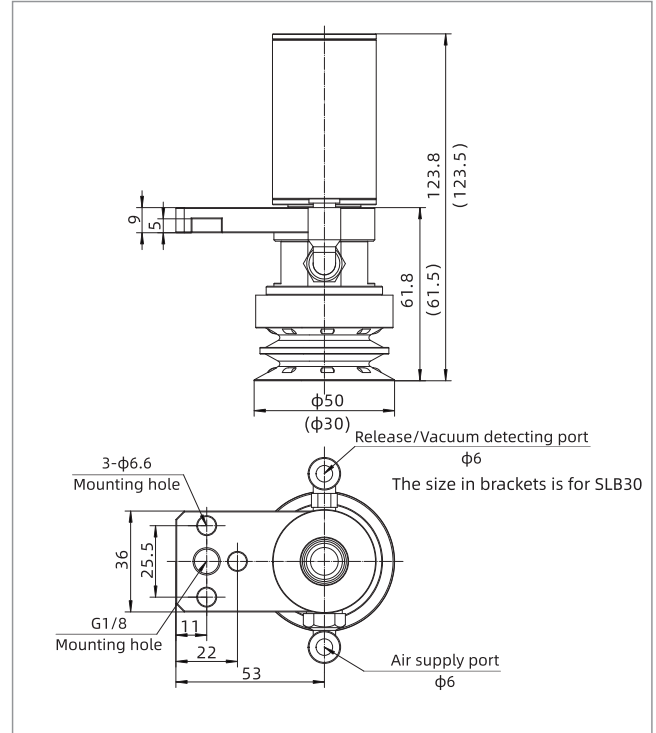
Thin Lip Flow Gripper



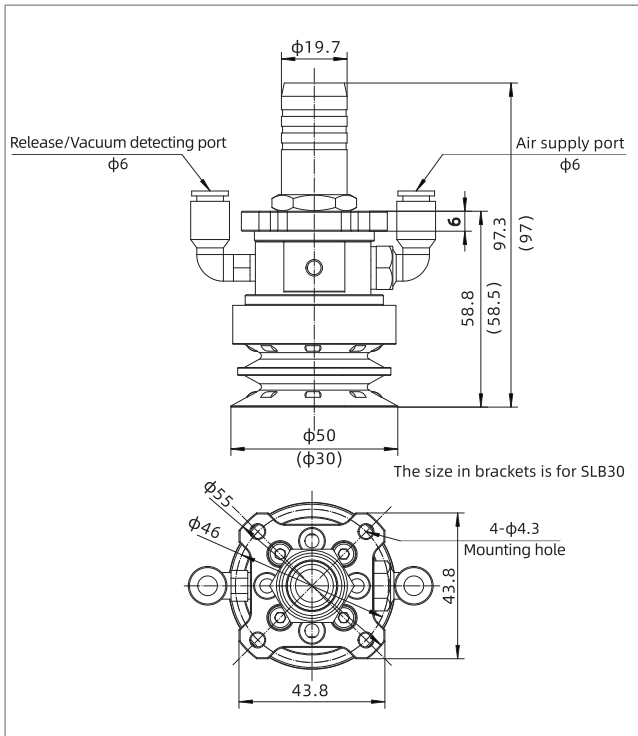
Dimensions(mm)



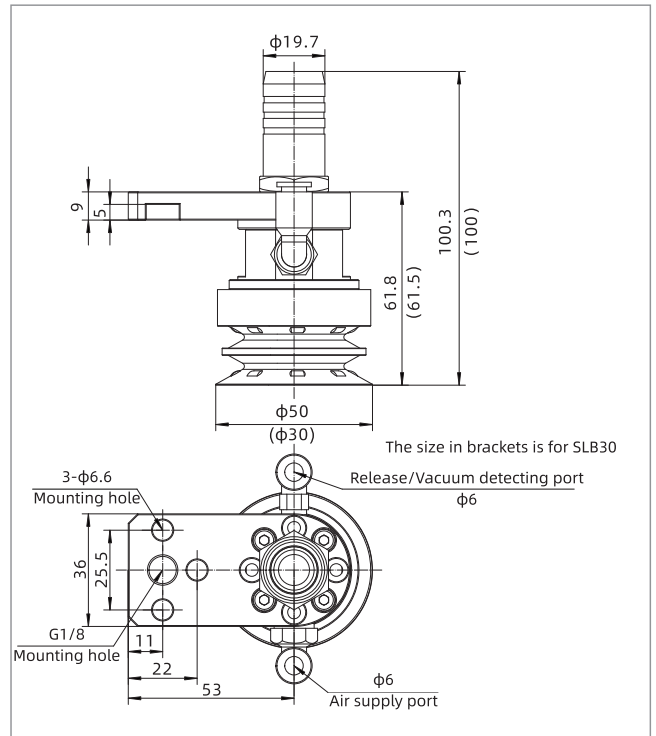
SLB50(30)E-M10SD-F13



SLB50(30)E-M10SD-F11



SLB50(30)E-M10TD-F13



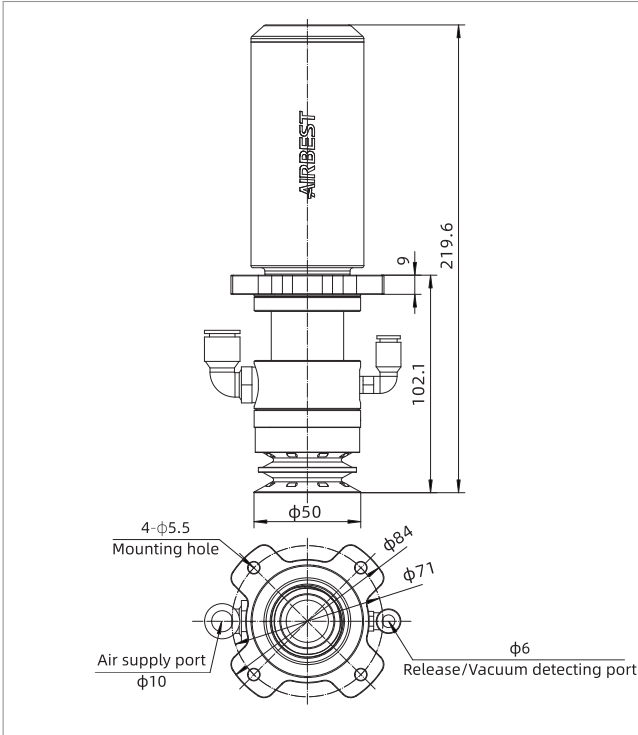
SLB50(30)E-M10TD-F11

SLB Series

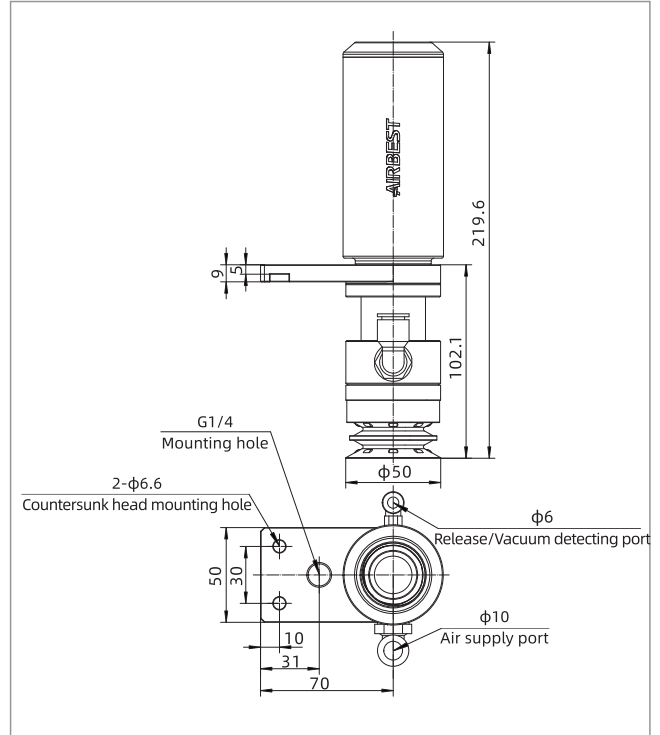
Thin Lip Flow Gripper



Dimensions(mm)



SLB50-M20SD-F2



SLB50-M20SD-F4

- SLG
- SNC
- SNT
- SLP
- SLB**
- SLW
- SLF

SLW Series

Wafer Gripper



Features

- ◇ Multihole adsorbing area, prevent the physical deformation of fragile workpiece
- ◇ Integrated with suction cup and vacuum generator
- ◇ Vertical exhaust and lateral exhaust for option
- ◇ Vertical and horizontal mounting types for option

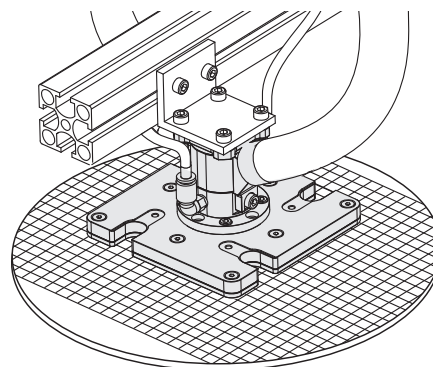
Advantages

- ◇ Reduce fragment rate
- ◇ With vacuum release port, improve efficiency
- ◇ Easy to install, different types for option
- ◇ Simple structure, integrated design, could connect to compressed air directly, no need extra vacuum generator



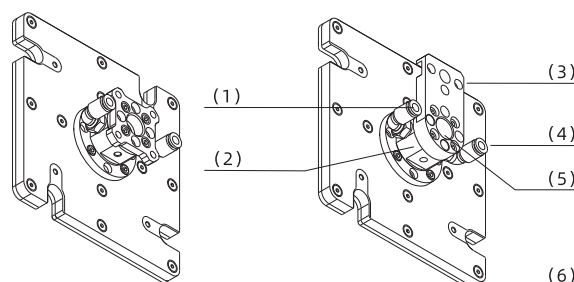
Application

- ◇ Suitable for handling fragile workpieces, such as silicon wafer, solar cell, glass, etc.



Structure

- ◇ (1) Air supply port
- ◇ (2) Vacuum generator
- ◇ (3) Mounting flange
- ◇ (4) Release/Vacuum detecting port
- ◇ (5) Exhaust port
- ◇ (6) Adsorbing area



SLW Series

Wafer Gripper

How to order

SLW 115 PK - M10 I - F1

① ② ③ ④ ⑤ ⑥

Series	Dimension	③ Material of suction cup	④ Specification of vacuum generator	⑤ Exhaust direction	⑥ Mounting flange
SLW	100 - 100x55mm	PK - PEEK	M10 - Diameter ϕ 10mm	I - Vertical exhaust	F1 - Vertical, 55x6mm
	115 - 115x115mm	AE - Aluminum plate+ EPDM support cushion	M15 - Diameter ϕ 15mm	Y - Lateral exhaust	F3 - Horizontal, 71x9mm
	146 - 146x146mm				F9 - Vertical, Triangular flange
	170 - 170x105mm	FT - Sponge+PTFE			
	120 - ϕ 120mm				
	150 - ϕ 150mm				
	180 - ϕ 180mm				

Selection

Model/ Specification of vacuum generator M10		M15	
SLW100PK-M10I-F1	SLW100PK-M10Y-F1	SLW120AE-M15I-F9	SLW120FT-M15I-F9
SLW100PK-M10I-F3	SLW100PK-M10Y-F3	-	-
SLW115PK-M10I-F1	SLW115PK-M10Y-F1	SLW150AE-M15I-F9	SLW150FT-M15I-F9
SLW115PK-M10I-F3	SLW115PK-M10Y-F3	-	-
SLW146PK-M10I-F1	SLW146PK-M10Y-F1	SLW180AE-M15I-F9	SLW180FT-M15I-F9
SLW146PK-M10I-F3	SLW146PK-M10Y-F3	-	-
SLW170PK-M10I-F1	SLW170PK-M10Y-F1	-	-
SLW170PK-M10I-F3	SLW170PK-M10Y-F3	-	-

Technical parameters

Model	Air supply pressure range bar	Rated air supply pressure bar	Max. vacuum level -kPa	Max. vacuum flow NL/min	Air consumption NL/min	Working temperature °C
SLW115-M10	1.0~7.0	5.0	11	400~430	150	0~60
SLW146-M10	1.0~7.0	5.0	11	410~440	150	0~60
SLW100-M10	1.0~7.0	5.0	11	330~460	150	0~60
SLW170-M10	1.0~7.0	5.0	11	350~490	150	0~60
SLW120-M15	1.0~7.0	5.0	4.5	370~460	150	0~60
SLW150-M15	1.0~7.0	5.0	4.5	370~460	160	0~60
SLW180-M15	1.0~7.0	5.0	4.5	370~460	180	0~60

Special Vacuum Grippers

SLG

SNC

SNT

SLP

SLB

SLW

SLF

SLW Series

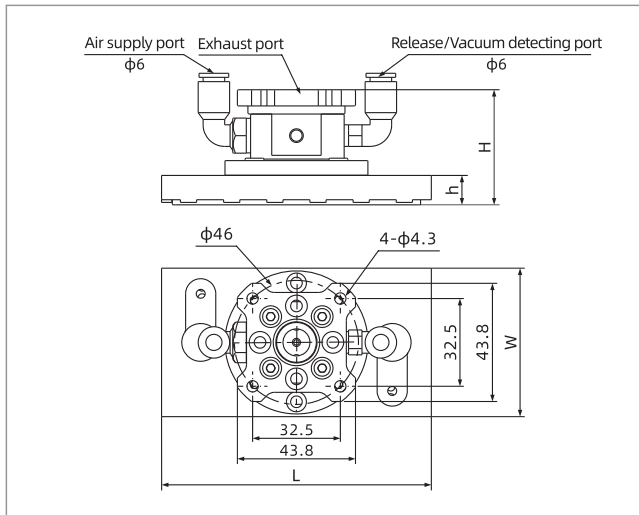
Wafer Gripper



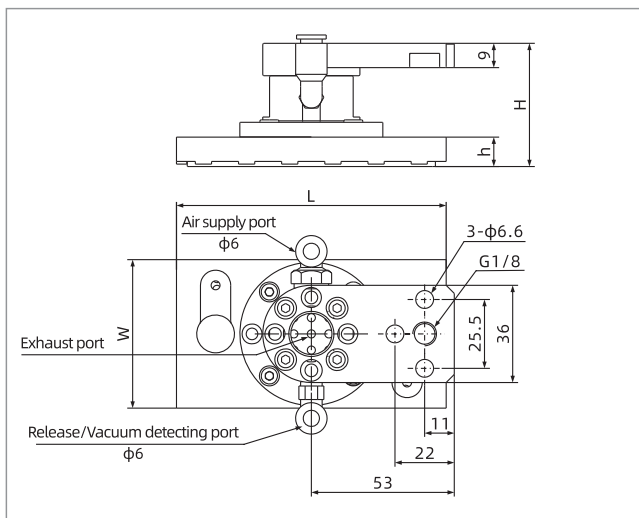
Vacuum flow (NL/min) at different vacuum levels (-kPa)

Model	Air supply pressure bar	Air consumption NL/min	0	1.5	2.5	3.5	4.5	5.5	6.5	7.5	11	Max. vacuum level -kPa
SLW115-M10	5.0	150	400	375	363	334	315	289	265	246	215	11
SLW146-M10	5.0	150	410	386	370	330	324	296	374	258	234	11
SLW100-M10	5.0	150	330	311	285	263	241	219	198	179	160	11
SLW170-M10	5.0	150	350	330	310	280	263	238	219	200	180	11
SLW120-M15	5.0	150	440	429	407	385	363	335	308	275	-	4.5
SLW150-M15	5.0	160	440	429	407	385	363	335	308	275	-	4.5
SLW180-M15	5.0	180	440	429	407	385	363	335	308	275	-	4.5

Dimensions(mm)



SLW□PK-M10I-F1



SLW□PK-M10I-F3

Model/Size	L	W	H	h	Weight g
SLW100PK-M10I-F1	100	55	43	11	220
SLW115PK-M10I-F1	115	115	43	11	350
SLW146PK-M10I-F1	146	146	43	11	458
SLW170PK-M10I-F1	170	105	43	11	354

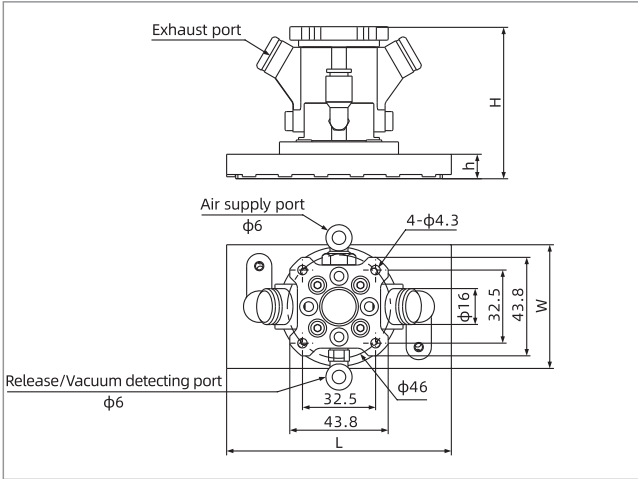
Model/Size	L	W	H	h	Weight g
SLW100PK-M10I-F3	100	55	46	11	135
SLW115PK-M10I-F3	115	115	46	11	376
SLW146PK-M10I-F3	146	146	46	11	484
SLW170PK-M10I-F3	170	105	46	11	386

SLW Series

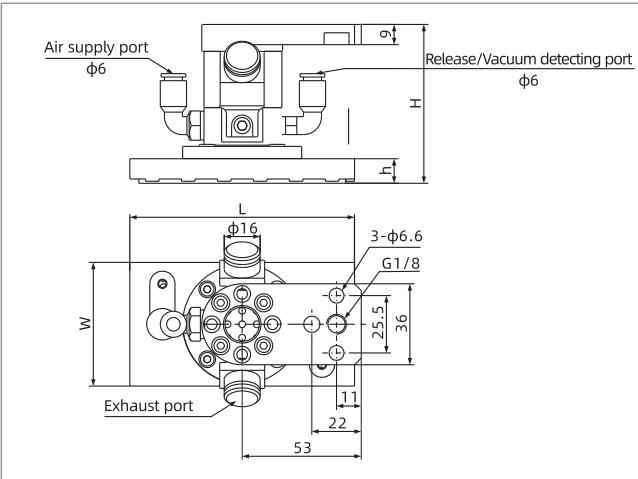
Wafer Gripper



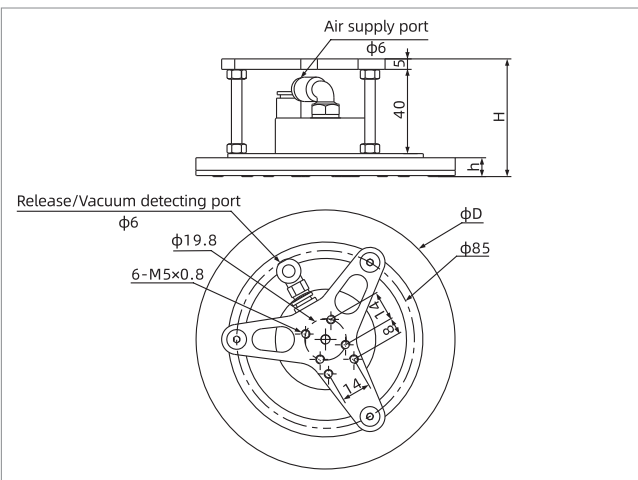
Dimensions(mm)



SLW□PK-M10Y-F1



SLW□PK-M10Y-F3



SLW□AE-M15I-F9

Model/Size	L	W	H	h	Weight g
SLW100PK-M10Y-F1	100	55	68	11	284
SLW115PK-M10Y-F1	115	115	68	11	415
SLW146PK-M10Y-F1	146	146	68	11	523
SLW170PK-M10Y-F1	170	105	68	11	420

Model/Size	L	W	H	h	Weight g
SLW100PK-M10Y-F3	100	55	71	11	310
SLW115PK-M10Y-F3	115	115	71	11	441
SLW146PK-M10Y-F3	146	146	71	11	549
SLW170PK-M10Y-F3	170	105	71	11	445

Model/Size	D	H	h	Weight g
SLW120AE-M15I-F9	124	53.5~57	9.5	343
SLW120FT-M15I-F9	124	56~59	12	375
SLW150AE-M15I-F9	149	53.5~57	9.5	418
SLW150FT-M15I-F9	149	56~59	12	472
SLW180AE-M15I-F9	179	53.5~57	9.5	632
SLW180FT-M15I-F9	179	56~59	12	630

Special Vacuum Grippers

SLG

SNC

SNT

SLP

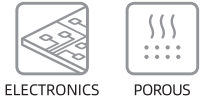
SLB

SLW

SLF

SLF Series Matrix Gripper

AIRBEST



Features

- ◇ Various types for option, built-in vacuum generator type, external blower type, external vacuum generator type
- ◇ With throttling function
- ◇ Suction cups on the adsorbing area

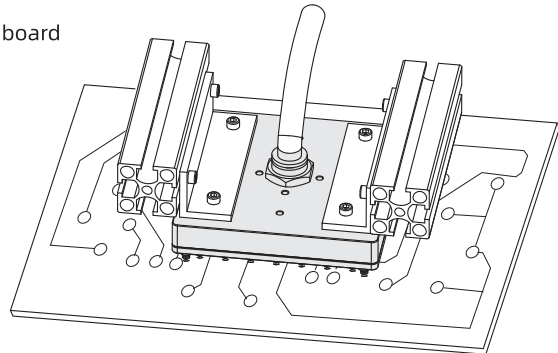


Advantages

- ◇ Easy to install and maintain
- ◇ Flexible selection according to the actual working condition
- ◇ Suitable for handling hollow or irregular workpieces, prevent the adhesion between workpieces
- ◇ Flexible gripping, prevent the deformation of the workpiece during handling

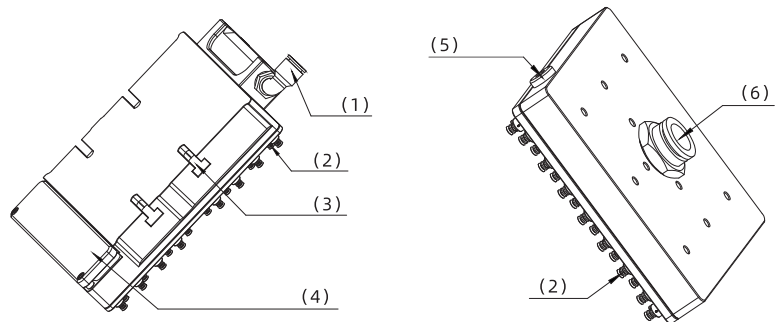
Application

- ◇ Suitable for handling porous workpieces, such as printed PCB, PVC board
- ◇ Handling irregular workpieces
- ◇ Suitable for electronic industry



Structure

- ◇ (1) Air supply port
- ◇ (2) Suction cups
- ◇ (3) T type installation slot
- ◇ (4) Exhaust port
- ◇ (5) Vacuum detecting port
- ◇ (6) Vacuum port



SLF Series

Matrix Gripper



How to order

SLF 180 S - 5 WS

① ② ③ ④ ⑤

① Series	② Size	③ Type of vacuum source	④ Dia.of suction cup	⑤ Suction cup material
SLF	140 - 140x140mm	Nil - Default, external blower	Nil - SPC7	Nil - NBR
	180 - 180x180mm	W - External vacuum generator	3 - SPC3	WS - White silicone
		S - Built-in flow type vacuum generator	5 - SPC5	E - EPDM
		X - Built-in vacuum type vacuum generator		

Selection

Model/ Type of vacuum source 140	140W	180	180W	180S	180X
SLF140	SLF140W	SLF180	SLF180W	SLF180S	SLF180X
SLF140-WS	SLF140W-WS	SLF180-WS	SLF180W-WS	SLF180S-WS	SLF180X-WS
SLF140-E	SLF140W-E	SLF180-E	SLF180W-E	SLF180S-E	SLF180X-E
SLF140-3	SLF140W-3	SLF180-3	SLF180W-3	SLF180S-3	SLF180X-3
SLF140-3WS	SLF140W-3WS	SLF180-3WS	SLF180W-3WS	SLF180S-3WS	SLF180X-3WS
SLF140-3E	SLF140W-3E	SLF180-3E	SLF180W3-E	SLF180S-3E	SLF180X-3E
SLF140-5	SLF140W-5	SLF180-5	SLF180W-5	SLF180S-5	SLF180X-5
SLF140-5WS	SLF140W-5WS	SLF180-5WS	SLF180W-5WS	SLF180S-5WS	SLF180X-5WS
SLF140-5E	SLF140W-5E	SLF180-5E	SLF180W-5E	SLF180S-5E	SLF180X-5E

Technical parameters

Model	Air supply pressure range bar	Working temperature °C	Vacuum source	QTY of suction cup pcs	Weight g
SLF140	1.0~7.0	0~60	External blower	186	890
SLF180	1.0~7.0	0~60	External blower	312	1,460
SLF140W	1.0~7.0	0~60	External large flow vacuum generator	114	1,070
SLF180W	1.0~7.0	0~60	External large flow vacuum generator	76	1,330

Technical parameters

Model	Air supply pressure range bar	Rated air supply pressure bar	Max. vacuum level -kPa	Max. vacuum flow NL/min	Air consumption NL/min	Working temperature °C	QTY of suction cup pcs	Weight g
SLF180S	1.0~7.0	5.0	58	242	360	0~60	76	1,220
SLF180X	1.0~7.0	5.0	80	250	480	0~60	76	1,220

Special Vacuum Grippers

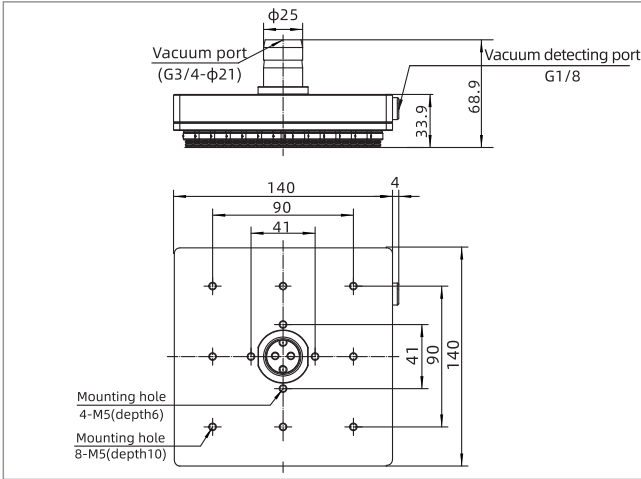
SLG
SNC
SNT
SLP
SLB
SLW
SLF

SLF Series

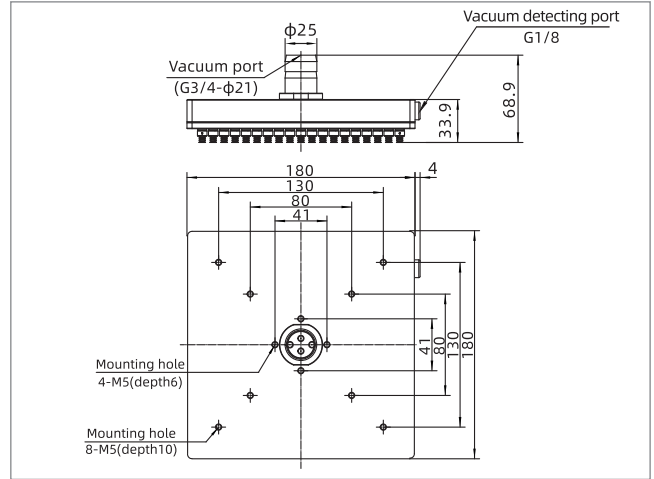
Matrix Gripper



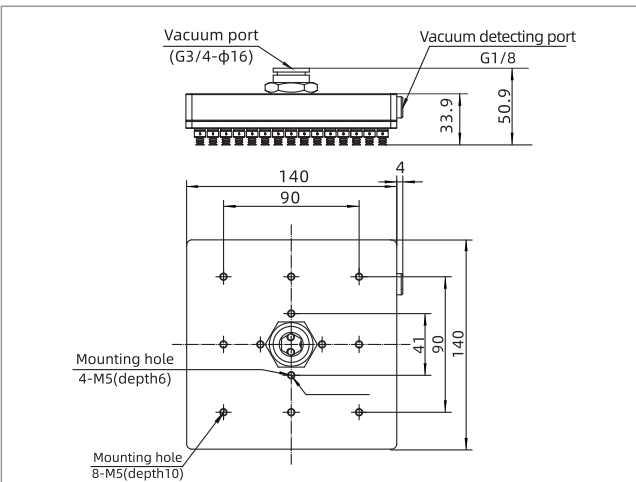
Dimensions(mm)



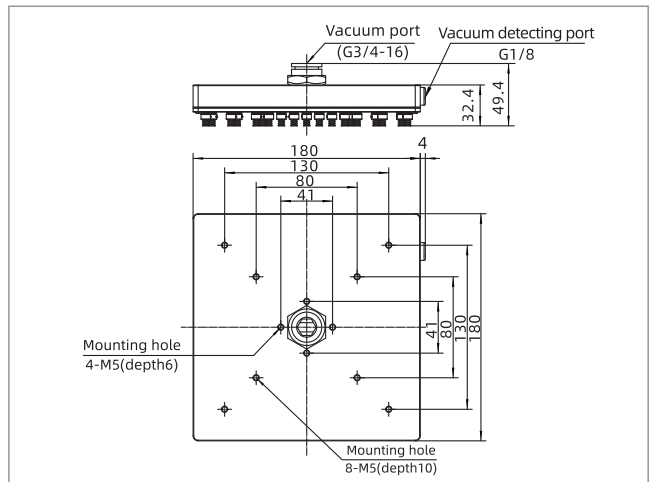
SLF140



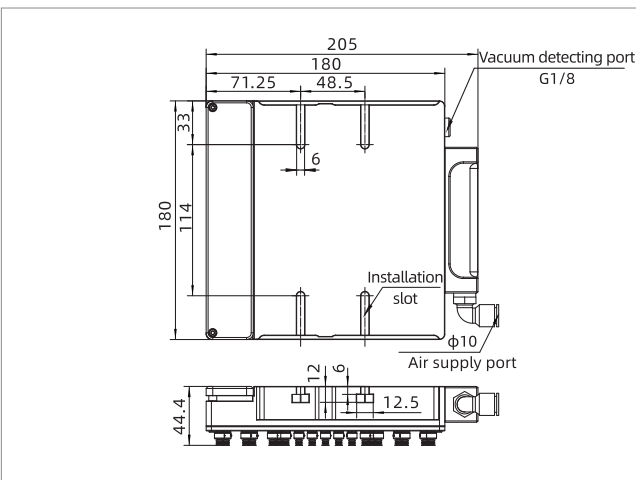
SLF180



SLF140W



SLF180W



SLF180X(5)

E Vacuum Grippers

Vacuum grippers

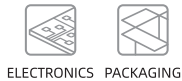
Products overview

Vacuum grippers

354 TXN Series

Vacuum Gripper-Mini Type

- ◇ Vacuum type: Built-in vacuum generator Without vacuum generator
- ◇ Adsorption surface type: Sponge Suction cup



ELECTRONICS PACKAGING



372 TXP Series

Vacuum Gripper-Oval Shaped

- ◇ Vacuum type: External Blower
- ◇ Adsorption surface type: Sponge



PACKAGING



360 TXD Series

Vacuum Gripper-Light Load Type

- ◇ Vacuum type: Built-in vacuum generator
- ◇ Adsorption surface type: Sponge Suction cup



PACKAGING



374 TXH Series

Vacuum Gripper-Heavy Load Type

- ◇ Vacuum type: With vacuum generator Without vacuum generator
- ◇ Adsorption surface type: Sponge Suction cup



UNIVERSAL HEAVY LOAD



363 TXC Series

Vacuum Gripper -Vacuum Generator Standard Type

- ◇ Vacuum type: Built-in vacuum generator
- ◇ Adsorption surface type: Sponge Suction cup



UNIVERSAL



378 TXL Series

Vacuum Gripper -Combined Type

- ◇ Vacuum type: Built-in vacuum generator External Blower
- ◇ Adsorption surface type: Sponge Suction cup



UNIVERSAL



368 TXM Series

Vacuum gripper-blower standard type

- ◇ Vacuum type: External Blower
- ◇ Adsorption surface type: Sponge Suction cup



UNIVERSAL



TXN Series

Vacuum Gripper-Mini Type



ELECTRONICS PACKAGING

Features

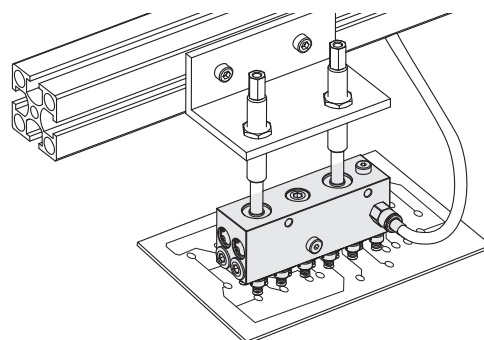
- ◇ Small size, simple structure and light weight
- ◇ Various vacuum sources, can select built-in vacuum generator or external blower
- ◇ Sponge type: Conventional sponge, Mark free sponge, Conductive sponge can be selected
- ◇ Suction cup type: The size, material and rows of suction cups are optional

Advantages

- ◇ It is easy to install and maintain
- ◇ Customers can choose accurately according to the actual application, built-in vacuum generator structure can save space and create vacuum fastly, easy to control
- ◇ Sponge type can achieve flexible contact, when touching with glass and other fragile workpieces, it could be mark free and non-positioning suction
- ◇ Suction cup type has throttling effect, which can be used to adsorb hollow porous, uneven, different shapes of workpieces

Applications

- ◇ Used for handling light and small fragile workpieces, such as electronics, glass screen, electronic components and PCB board, etc.
- ◇ Sponge type can also be used for sorting and labeling in packaging industry



Vacuum gripper

TXN

TXD

TXC

TXM

TXP

TXH

TXL

Structure

- ◇ The main body is made of aluminum alloy
- ◇ The vacuum gripper TXN22 × 38/TXN22 × 76 are without vacuum generator, others are with built-in vacuum generator

TXN Series

Vacuum Gripper-Mini Type



How to order

TXN 15×76 - B5N WS - C

① ② ③ ④ ⑤

① Series	② Dimension	③ Adsorption surface type	④ Material of suction cup	⑤ Vacuum type
TXN	22×38	A - Conventional sponge	Nil - Default,NBR	Nil - Without vacuum generator
	22×76	AT - Mark free sponge	WS - White silicone	C - With built-in vacuum generator
	15×76	CA - Conductive sponge		
	15×90	B3 - φ3 Single-row suction cup		
	27×90	B5 - φ5 Single-row suction cup		
	60×120	B7 - φ7 Single-row suction cup		
		B3N - φ3 double-row suction cup		
		B5N - φ5 double-row suction cup		
		B7N - φ7 double-row suction cup		
		B3D - φ3 four-row suction cup		
		B5D - φ5 four-row suction cup		
		B7D - φ7 four-row suction cup		

Selection - Sponge type

Model/Adsorption surface type	A - Conventional sponge	AT - Mark free sponge	CA - Conductive sponge
TXN22×38-□	TXN22×38-A	TXN22×38-AT	TXN22×38-CA
TXN22×38-□	TXN22×38-A	TXN22×38-AT	TXN22×38-CA
TXN60×120-□-C	TXN60×120-A-C	-	-

Selection - Suction cup type

Model/Suction cup material	Nil - NBR	WS - White silicone
TXN15×76-B5N□-C	TXN15×76-B5N-C	TXN15×76-B5NWS-C
TXN15×76-B7N□-C	TXN15×76-B7N-C	TXN15×76-B7NWS-C
TXN15×90-B3□-C	TXN15×90-B3-C	TXN15×90-B3WS-C
TXN15×90-B5□-C	TXN15×90-B5-C	TXN15×90-B5WS-C
TXN15×90-B7□-C	TXN15×90-B7-C	TXN15×90-B7WS-C
TXN15×90-B3N□-C	TXN15×90-B3N-C	TXN15×90-B3NWS-C
TXN15×90-B5N□-C	TXN15×90-B5N-C	TXN15×90-B5NWS-C
TXN15×90-B7N□-C	TXN15×90-B7N-C	TXN15×90-B7NWS-C
TXN27×90-B3D□-C	TXN27×90-B3D-C	TXN27×90-B3DWS-C
TXN27×90-B5D□-C	TXN27×90-B5D-C	TXN27×90-B5DWS-C
TXN27×90-B7D□-C	TXN27×90-B7D-C	TXN27×90-B7DWS-C

TXN22×38/TXN22×76



Vacuum Gripper-Mini Type

Features

- ◇ The gripper is used in the handling and sorting process of light and small workpieces. It is suitable to handle multihole workpieces and partial leakage workpieces

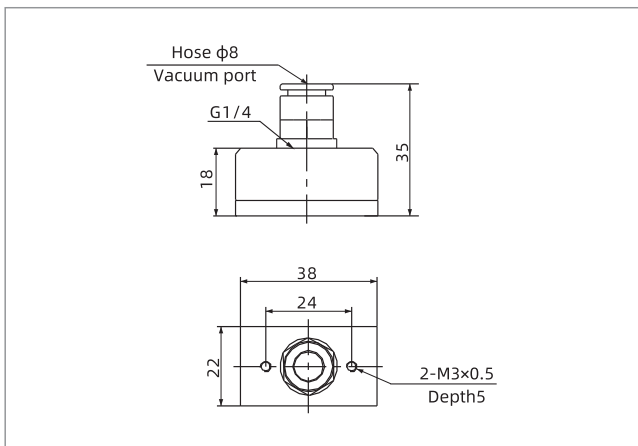


Technical parameters

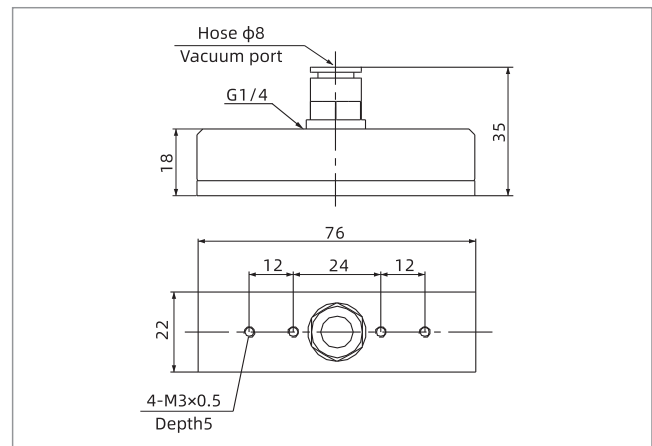
Model	Theoretical suction force N	Recommended min. flow of vacuum generator NL/min	Optional function	Working temperature °C	Weight g	Recommended hose dia.(mm) Vacuum port (V)
TXN22×38	18	≥40	Mark free/Conductive	0-60	45	φ8
TXN22×76	34	≥60	Mark free/Conductive	0-60	68	φ8

- ◇ Note: 1. Testing vacuum level is -60kPa, the data of theoretical suction force as above are figured out in the condition that the vacuum gripper is fully covered by a rigid airtight workpiece, and without considering safety factor.
- 2. The mark free in the optional function of the above table indicates that special materials are attached to the sponge surface to reduce the mark on the contact surface.
- 3. Conductivity in the optional function shown in the above table indicates the use of special conductive sponge materials.

Dimensions(mm)



TXN22×38



TXN22×76

Spare parts selection

Item	Sponge model	Dimension mm	Application
22×38 Conventional sponge	TXN38-A	22×38×4	Conventional application
22×38 Mark free sponge	TXN38-AT	22×38×4	Mark free application
22×38 Conductive sponge	TXN38-CA	22×38×4	Conductive application
22×76 Conventional sponge	TXN76-A	22×76×4	Conventional application
22×76 Mark free sponge	TXN76-AT	22×76×4	Mark free application
22×76 Conductive sponge	TXN76-CA	22×76×4	Conductive application

Vacuum gripper

TXN

TXD

TXC

TXM

TXP

TXH

TXL

TXN15×76

Vacuum Gripper-Mini Type



Features

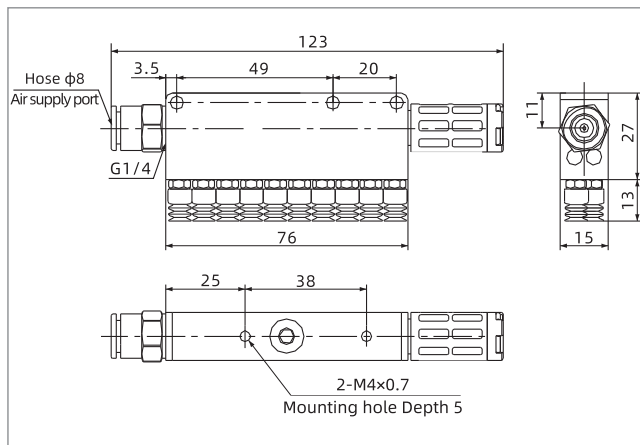
- ◇ The gripper is used in the handling and sorting process of light and small workpieces. It is suitable to handle multihole workpieces and partial leakage workpieces



Technical parameters

Model	Air supply pressure bar	Max.vacuum level -kPa	Max.vacuum flow NL/min	Air consumption NL/min	Working temperature °C	QTY of suction cup pcs	Weight g
TXN15×76	5.0	85	40	45	0~60	10	110

Dimensions (mm)



TXN15×76

Spare parts selection

Item	Model of suction cup	Diameter of suction cup mm
TXN suction cup	TXN-B5 TXN-B5WS	φ5
TXN suction cup	TXN-B7 TXN-B7WS	φ7

TXN15×90/TXN27×90

Vacuum Gripper-Mini Type



Features

- ◇ The gripper has throttling effect, which can be used to adsorb hollow porous, uneven, different shapes of workpieces. It can achieve suction without positioning, and can effectively grasp in case of leakage to protect workpieces

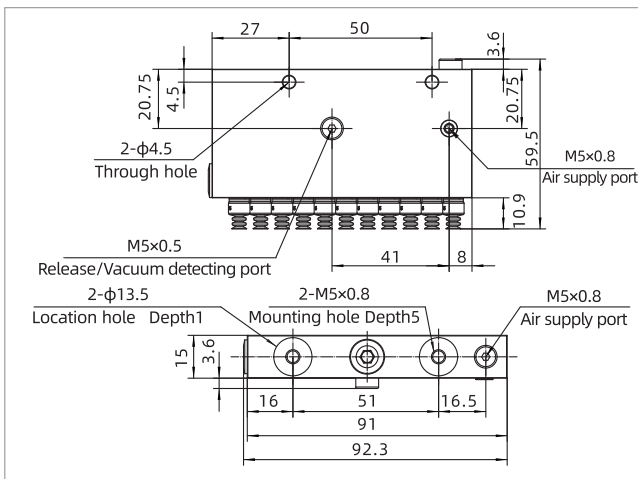


Technical parameters

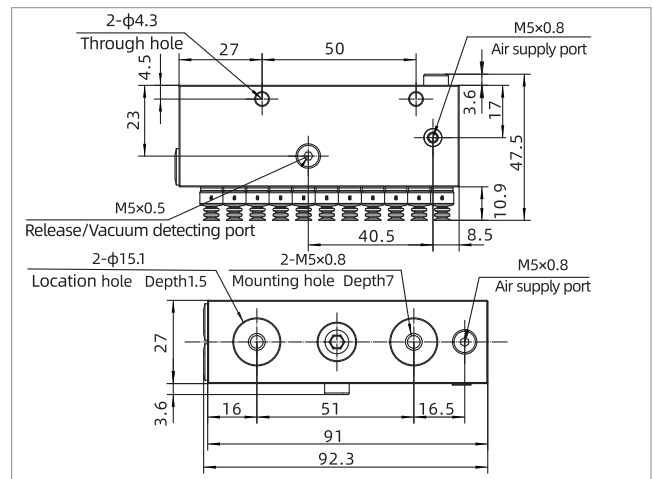
Model	Air supply pressure range bar	Max.vacuum level covered area 100%	Max.vacuum level covered area 25%	Max.vacuum flow NL/min	Air consumption NL/min	Working temperature °C	QTY of suction cup pcs	Weight g
TXN15×90	5.0-6.0	88	50	140	77	0~80	9/11	150
TXN27×90	5.0-6.0	88	25	140	77	0~80	22	190

- ◇ Note: 1. TXN15 × 90 can be made into single-row and double-row suction cups. The suction cup quantity of single-row is 9pcs, the suction cup quantity of double-row is 11pcs.
2. TXN27 × 90 can be only made into four-row suction cups, and the quantity of suction cups is 22pcs.

Dimensions(mm)



TXN15×90



TXN27×90

Vacuum gripper

TXN

TXD

TXC

TXM

TXP

TXH

TXL

TXN60×120

Vacuum Gripper-Mini Type



Features

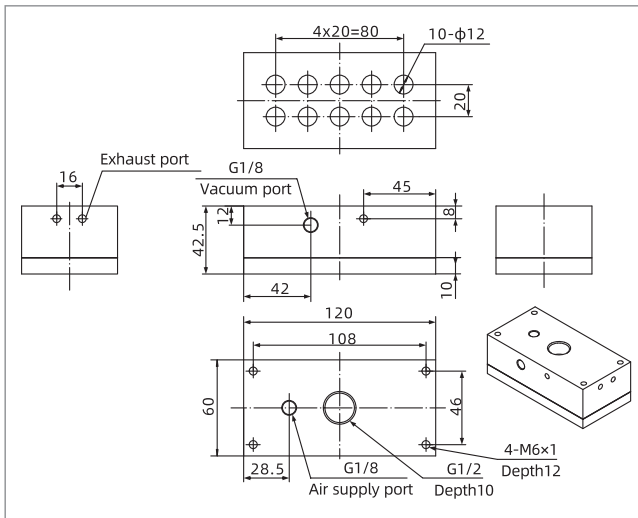
- ◇ The gripper is used in the handling and sorting process of light and small workpieces. It is suitable to handle multihole workpieces and partial leakage workpieces



Technical parameters

Model	Air supply pressure bar	Max.vacuum level -kPa	Max.vacuum flow NL/min	Air consumption NL/min	Working temperature °C	Air supply port	Weight g
TXN60×120	6.0	85	150	75	0-60	G1/8	500

Dimensions(mm)



TXN60×120

Spare parts selection

Item	Model	Dimension mm
60×120 sponge	TXN120-A	60×120×10

TXD Series

Vacuum Gripper-Light Load Type



PACKAGING

Features

- ◇ The housing is made of high quality aluminum alloy
- ◇ With built-in large flow vacuum generator
- ◇ Suction cup adsorption surface type, with built-in throttling function
- ◇ Sponge adsorption surface type, with large area structure of inner cavity

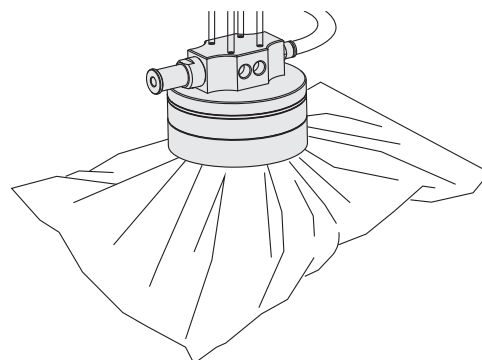
Advantages

- ◇ High strength and light weight
- ◇ Fast reaction time
- ◇ The inner cavity is large enough to handle the workpiece with obvious height difference on the surface



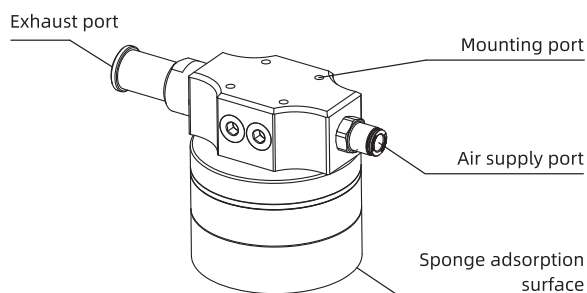
Applications

- ◇ Suction cup type is used to handle light and small sensitive workpieces, such as electronics, glass screen and electronic components, etc.
- ◇ Suction cup type is with built-in throttling function, which can be used to handle workpieces with leakage
- ◇ Sponge type is used for sorting and packing in packaging industry



Structure

- ◇ Vacuum source has flow type and vacuum type
- ◇ The adsorption surface has two structures: round and square
- ◇ Air supply port is equipped with $\phi 8$ one-touch fitting, which can be directly connected to the hose. There is a vacuum port on the side. The exhaust way is direct exhaust.



Vacuum gripper

TXN

TXD

TXC

TXM

TXP

TXH

TXL

TXD Series

Vacuum Gripper-Light Load Type



How to order

TXD 80 S - H
① ② ③ ④

① Series	② Dimension	③ Adsorption surface type		④ Vacuum source type
TXD	80	R	- Square sponge	H - Vacuum type (-95kPa)
	100	S	- Round sponge	L - Flow type (-75kPa)
	120	B3N/B5N/B7N	- Round NBR suction cup	
		B3WS/B5WS/B7WS	- Round silicone suction cup	

Selection-Sponge type

Model/adsorption surface type	R - Square sponge		S - Round sponge	
TXD80□-□	TXD80R-H	TXD80R-L	TXD80S-H	TXD80S-L
TXD100□-□	TXD100R-H	TXD100R-L	TXD100S-H	TXD100S-L
TXD120□-□	TXD120R-H	TXD120R-L	TXD120S-H	TXD120S-L

Selection-suction cup type

Model/suction cup material	Nil-NBR		WS-White silicone	
TXD80B3□-□	TXD80B3N-H	TXD80B3N-L	TXD80B3WS-H	TXD80B3WS-L
TXD80B5□-□	TXD80B5N-H	TXD80B5N-L	TXD80B5WS-H	TXD80B5WS-L
TXD80B7□-□	TXD80B7N-H	TXD80B7N-L	TXD80B7WS-H	TXD80B7WS-L

Technical parameters

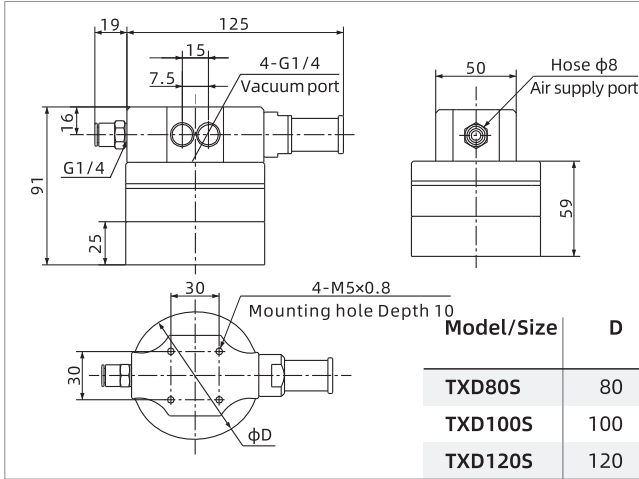
Model	Rated air supply pressure bar	Max.vacuum level -kPa	Max.vacuum flow NL/min	Air consumption NL/min	Weight kg	Recommended hose dia. (mm) Air supply port P
TXD80R-L	6.0	75	180	120	0.55	φ8
TXD80R-H	5.0	95	170	125	0.55	φ8
TXD80S-L	6.0	75	180	120	0.5	φ8
TXD80S-H	5.0	95	170	125	0.5	φ8
TXD80B-L	6.0	75	180	120	0.65	φ8
TXD80B-H	5.0	95	170	125	0.7	φ8
TXD100R-L	6.0	75	180	120	0.65	φ8
TXD100R-H	5.0	95	170	125	0.65	φ8
TXD100S-L	6.0	75	180	120	0.6	φ8
TXD100S-H	5.0	95	170	125	0.6	φ8
TXD120R-L	6.0	75	180	120	0.73	φ8
TXD120R-H	5.0	95	170	125	0.73	φ8
TXD120S-L	6.0	75	180	120	0.8	φ8
TXD120S-H	5.0	95	170	125	0.8	φ8

TXD Series

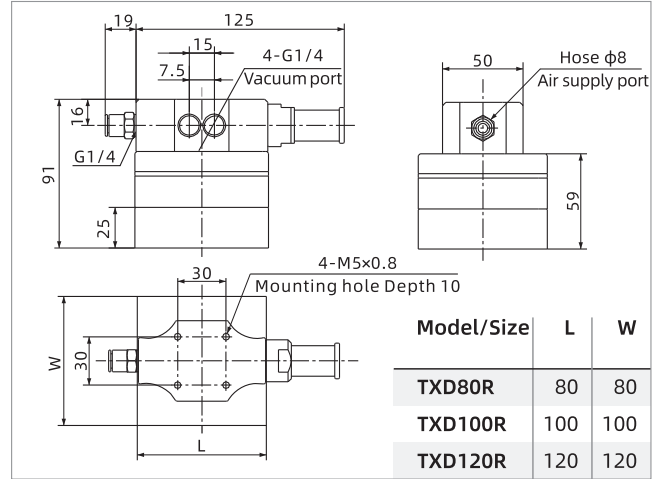
Vacuum Gripper-Light Load Type



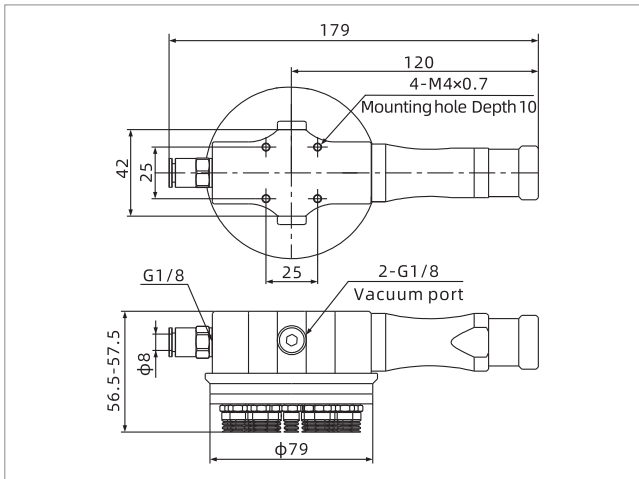
Dimensions(mm)



TXD□S - Round sponge



TXD□R - Square sponge



TXD80B - Round suction cup

Spare parts selection

Item	Adsorption surface model	Adsorption surface dimension mm	Applicable gripper model
TXD80R Spone	TXD80RA	φ80×25	TXD80R-H、TXD80R-L
TXD80S Spone	TXD80SA	80×80×25	TXD80S-H、TXD80S-L
TXD100R Spone	TXD100RA	φ100×25	TXD100R-H、TXD100R-L
TXD100S Spone	TXD100SA	100×100×25	TXD100S-H、TXD100S-L
TXD120R Spone	TXD120RA	φ120×25	TXD120R-H、TXD120R-L
TXD120S Spone	TXD120SA	120×120×25	TXD120S-H、TXD120S-L

Vacuum gripper

- TXN
- TXD
- TXC
- TXM
- TXP
- TXH
- TXL

TXC Series



Vacuum Gripper -Vacuum Generator Standard Type



UNIVERSAL

Features

- ◇ The housing is made of high quality aluminum alloy
- ◇ With built-in large flow vacuum generator
- ◇ Suction cup type and sponge type are optional for adsorption surface
- ◇ Built-in non-return valve can be selected

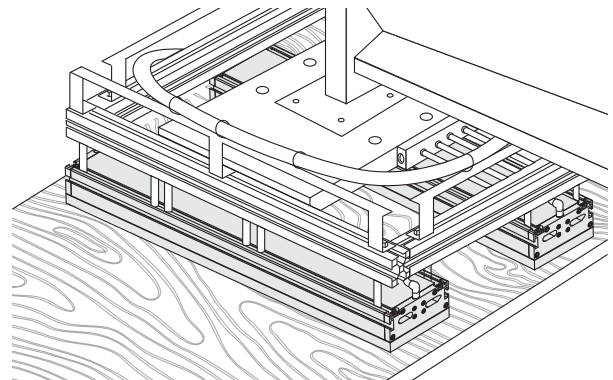
Advantages

- ◇ High strength and light weight
- ◇ Fast reaction time
- ◇ Suitable for the handling of various industries
- ◇ It can meet the handling of different dimension workpieces



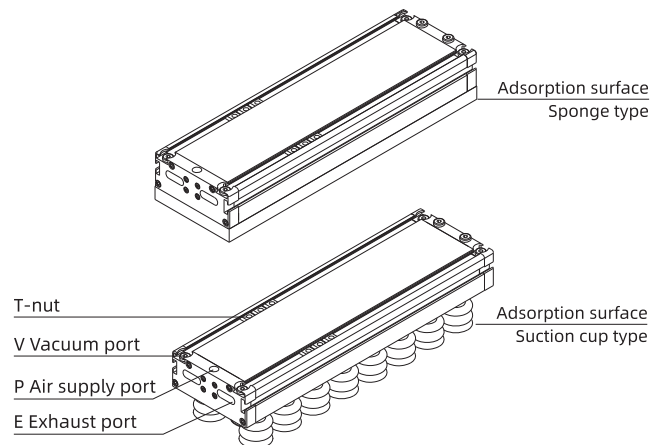
Applications

- ◇ Mainly used in the packaging industry, such as intelligent warehousing, intelligent logistics, stacking and unstacking, unmanned sorting, etc.
- ◇ With built-in non-return valve, it can be used to adsorb the workpieces with certain leakage, different sizes and different shapes
- ◇ Because of its light weight, it is very suitable for robots



Structure

- ◇ The main body is made of aluminum alloy, with T-shaped slots on the front and side respectively, which can be used for installation or mounting of the inductive switch
- ◇ It is equipped with T-nut (M8 × 1.25-T5)
- ◇ TXC130 ×400-800 has one air supply port (G1 / 4F) and six vacuum ports (6-G1 / 8F), direct exhaust from the side of the air supply end cover
- ◇ TXC130 ×1000-1200 has one air supply port (G1 / 4F) and four vacuum ports (4-G1 / 8F) at both end covers, direct exhaust from the side of the air supply end covers
- ◇ With built-in large flow vacuum generator, non-return valve is optional
- ◇ For sponge type, A1, A3, A5 sponge can be selected
- ◇ For suction cup type, B30, B40 can be selected



How to order

TXC 130×400 - A3 - V

① ② ③ ④

① Series	② Dimension	③ Adsorption surface type	④ Non-return valve
TXC	130×400	A1 - Single row sponge holes	Nil - Default, Without non-return valve (Throttling hole structure)
	130×600	A3 - Three rows sponge holes	
	130×800	A5 - Five rows sponge holes	V - With non-return valve (Ball valve structure)
	130×1000	B30 - Suction cup type(suction cup dia.30mm)	
	130×1200	B40 - Suction cup type(suction cup dia.40mm)	
	130×1400		

Selection-Standard type

Model/ Adsorption surface type	A1 - Single row sponge holes	A3 - Three rows sponge holes	A5 - Five rows sponge holes	B30 - Suction cup type	B40 - Suction cup type
TXC130×400-□	TXC130×400-A1	TXC130×400-A3	TXC130×400-A5	TXC130×400-B30	TXC130×400-B40
TXC130×600-□	TXC130×600-A1	TXC130×600-A3	TXC130×600-A5	TXC130×600-B30	TXC130×600-B40
TXC130×800-□	TXC130×800-A1	TXC130×800-A3	TXC130×800-A5	TXC130×800-B30	TXC130×800-B40
TXC130×1000-□	TXC130×1000-A1	TXC130×1000-A3	TXC130×1000-A5	TXC130×1000-B30	TXC130×1000-B40
TXC130×1200-□	TXC130×1200-A1	TXC130×1200-A3	TXC130×1200-A5	TXC130×1200-B30	TXC130×1200-B40
TXC130×1400-□	TXC130×1400-A1	TXC130×1400-A3	TXC130×1400-A5	TXC130×1400-B30	TXC130×1400-B40

Selection-With non-return valve

Model/ Adsorption surface type	A1 - Single row sponge holes	A3 - Three rows sponge holes	A5 - Five rows sponge holes	B30 - Suction cup type	B40 - Suction cup type
TXC130×400-□-V	TXC130×400-A1-V	TXC130×400-A3-V	TXC130×400-A5-V	TXC130×400-B30-V	TXC130×400-B40-V
TXC130×600-□-V	TXC130×600-A1-V	TXC130×600-A3-V	TXC130×600-A5-V	TXC130×600-B30-V	TXC130×600-B40-V
TXC130×800-□-V	TXC130×800-A1-V	TXC130×800-A3-V	TXC130×800-A5-V	TXC130×800-B30-V	TXC130×800-B40-V
TXC130×1000-□-V	TXC130×1000-A1-V	TXC130×1000-A3-V	TXC130×1000-A5-V	TXC130×1000-B30-V	TXC130×1000-B40-V
TXC130×1200-□-V	TXC130×1200-A1-V	TXC130×1200-A3-V	TXC130×1200-A5-V	TXC130×1200-B30-V	TXC130×1200-B40-V
TXC130×1400-□-V	TXC130×1400-A1-V	TXC130×1400-A3-V	TXC130×1400-A5-V	TXC130×1400-B30-V	TXC130×1400-B40-V

Technical parameters

Model	Rated air supply pressure bar	Max.vacuum flow NL/min	Air consumption NL/min	Max.theoretical suction force N (-60kPa)	Weight kg V-with non- return valve	Recommended hose dia. mm	QTY of suction hole PCS
TXC130×400-A1	6.0	710	230	559	2.6	1×φ10	15
TXC130×600-A1	6.0	1,050	345	820	3.4	1×φ10	22
TXC130×800-A1	6.0	1,410	460	1,180	4.2	1×φ10	30
TXC130×1000-A1	6.0	1,760	575	1,379	5.4	2×φ10	37
TXC130×1200-A1	6.0	2,100	690	1,640	6.2	2×φ10	44
TXC130×1400-A1	6.0	2,460	805	1,901	7.4	2×φ10	52

TXC Series

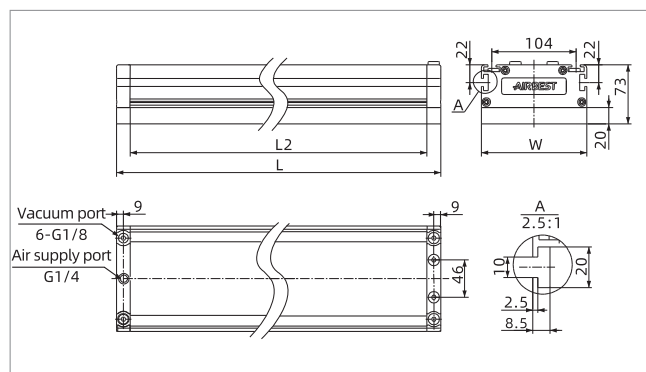


Vacuum Gripper -Vacuum Generator Standard Type

Technical parameters

Model	Rated air supply pressure bar	Max.vacuum flow NL/min	Air consumption NL/min	Max.theoretical suction force N (-60kPa)	Weight KG V-with non-return valve	Recommended hose dia. mm	QTY of suction hole PCS
TXC130×400-A3	6.0	710	230	344	2.6	1×φ10	65
TXC130×600-A3	6.0	1,050	345	519	3.4	1×φ10	98
TXC130×800-A3	6.0	1,410	460	694	4.2	1×φ10	131
TXC130×1000-A3	6.0	1,760	575	869	5.4	2×φ10	164
TXC130×1200-A3	6.0	2,100	690	1,044	6.2	2×φ10	197
TXC130×1400-A3	6.0	2,460	805	1,219	7.4	2×φ10	230
TXC130×400-A5	6.0	710	230	340	2.6	1×φ10	108
TXC130×600-A5	6.0	1,050	345	510	3.4	1×φ10	165
TXC130×800-A5	6.0	1,410	460	670	4.2	1×φ10	220
TXC130×1000-A5	6.0	1,760	575	870	5.4	2×φ10	275
TXC130×1200-A5	6.0	2,460	805	1,010	6.2	2×φ10	330
TXC130×1400-A5	6.0	2,810	920	1,180	7.4	2×φ10	385
TXC130×400-B30	6.0	710	230	588	3.3	1×φ10	28
TXC130×600-B30	6.0	1,050	345	903	4.3	1×φ10	43
TXC130×800-B30	6.0	1,410	460	1,155	5.4	1×φ10	55
TXC130×1000-B30	6.0	1,760	575	1,470	7.0	2×φ10	70
TXC130×1200-B30	6.0	2,100	690	1,785	8.1	2×φ10	85
TXC130×1400-B30	6.0	2,460	805	2,058	9.6	2×φ10	98
TXC130×400-B40	6.0	710	230	867	3.6	1×φ10	23
TXC130×600-B40	6.0	1,050	345	1,319	4.9	1×φ10	35
TXC130×800-B40	6.0	1,410	460	1,771	6.2	1×φ10	47
TXC130×1000-B40	6.0	1,760	575	2,224	7.9	2×φ10	59
TXC130×1200-B40	6.0	2,100	690	2,676	9.3	2×φ10	71
TXC130×1400-B40	6.0	2,460	805	3,129	10.9	2×φ10	83

Dimensions(mm)



TXC130×400/600/800-A Sponge type

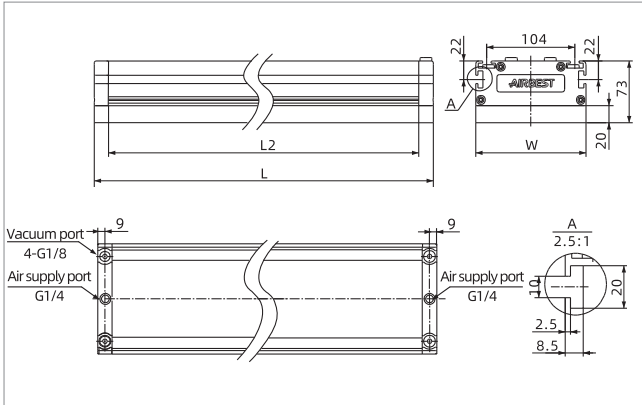
Model/Size	L	L2	W
TXC130×400-A	434	400	130
TXC130×600-A	634	600	130
TXC130×800-A	834	800	130

TXC Series

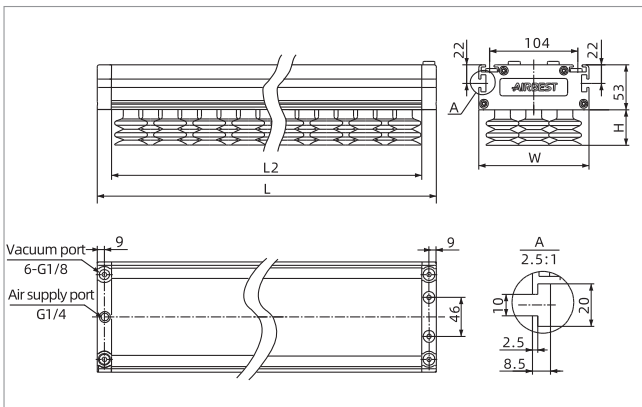


Vacuum Gripper - Vacuum Generator Standard Type

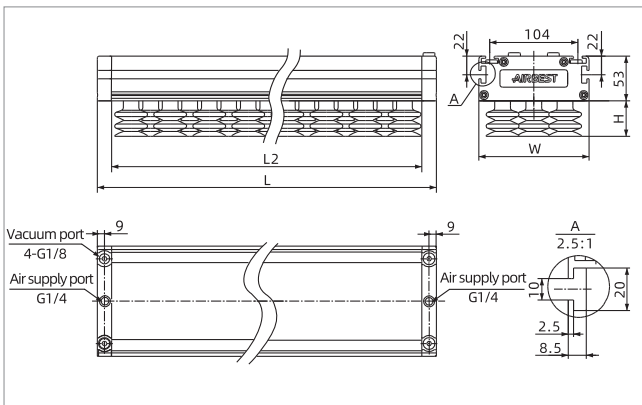
Dimensions(mm)



TXC130x1000/1200/1400-A Sponge type



TXC130x400/600/800-B Suction cup type



TXC130x1000/1200/1400-B Suction cup type

Model/Size	L	L2	W
TXC130x1000-A	1,034	1,000	130
TXC130x1200-A	1,234	1,200	130
TXC130x1400-A	1,434	1,400	130

Model/Size	L	L2	W	B30	H B40
TXC130x400-B	434	400	130	37	45
TXC130x600-B	634	600	130	37	45
TXC130x800-B	834	800	130	37	45

Model/Size	L	L2	W	B30	H B40
TXC130x1000-B	1,034	1,000	130	37	45
TXC130x1200-B	1,234	1,200	130	37	45
TXC130x1400-B	1,434	1,400	130	37	45

Vacuum gripper

TXN

TXD

TXC

TXM

TXP

TXH

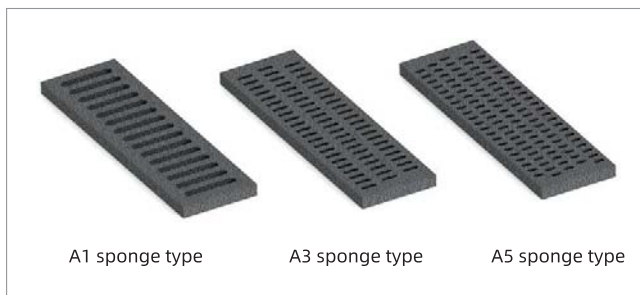
TXL

TXC Series



Vacuum Gripper -Vacuum Generator Standard Type

Spare parts selection(mm)



Sponge type



Suction cup type

Spare parts selection

Item	Model	Dimension mm
Sponge	TXC400-A1, TXC400-A3, TXC400-A5	434×130×20
	TXC600-A1, TXC600-A3, TXC600-A5	634×130×20
	TXC800-A1, TXC800-A3, TXC800-A5	834×130×20
	TXC1000-A1, TXC1000-A3, TXC1000-A5	1034×130×20
	TXC1200-A1, TXC1200-A3, TXC1200-A5	1234×130×20
Suction cup	TXC1400-A1, TXC1400-A3, TXC1400-A5	1434×130×20
	SPC30S	φ30
	SPC40S	φ40

◇ Note: Sponges are consumables in this product. Please replace it in time according to actual working conditions, otherwise, it will affect the adsorption effect.
Operating temperature: - 10 ~ 60 °C, do not contact with strong acid, strong alkali and other corrosive gas or liquid, do not contact with sharp objects.

TXM Series

Vacuum Gripper-Blower Standard Type



UNIVERSAL

Features

- ◇ The housing is made of high quality aluminum alloy
- ◇ External vacuum generator or blower can be connected
- ◇ Suction cup type and sponge type are optional for adsorption surface
- ◇ Built-in non-return valve can be selected

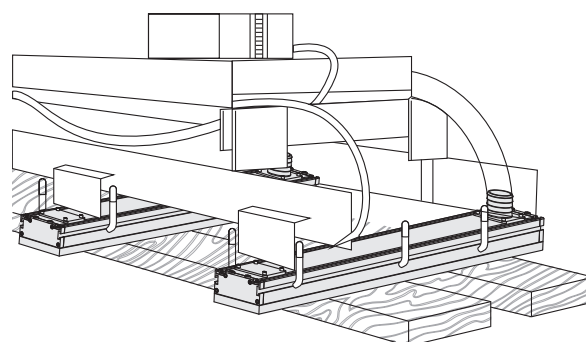
Advantages

- ◇ High strength and light weight
- ◇ The vacuum source can be selected accurately according to the actual working condition
- ◇ Suitable for the handling of various industries
- ◇ It can meet the handling of different dimension workpieces



Applications

- ◇ Mainly used in the packaging industry, such as intelligent warehousing, intelligent logistics, stacking and unstacking, unmanned sorting, etc.
- ◇ With built-in non-return valve, it can be used to adsorb the workpieces with certain leakage, different sizes and different shapes
- ◇ Because of its light weight, it is very suitable for robots



Vacuum gripper

TXN

TXD

TXC

TXM

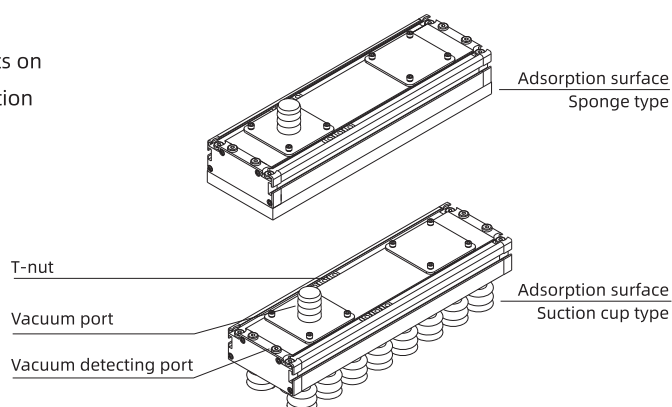
TXP

TXH

TXL

Structure

- ◇ The main body is made of aluminum alloy, with T-shaped slots on the front and side respectively, which can be used for installation or mounting of the inductive switch
- ◇ It is equipped with T-nut (M8 × 1.25-T5)
- ◇ The gripper has one vacuum port and 8 vacuum detecting ports (8-G1/8F). The vacuum port can connect to external steel wire hose
- ◇ Non-return valve is optional
- ◇ For sponge type, A1, A3, A5 sponge can be selected
- ◇ For suction cup type, B30, B40 can be selected



TXM Series



Vacuum Gripper-Blower Standard Type

How to order

TXM 130×400 - A3 - V
① ② ③ ④

① Series	② Dimension	③ Adsorption surface type	④ Non-return valve
TXM	130×400	A1 - Single row sponge holes	Nil - Default, Without non-return valve
	130×600	A3 - Three rows sponge holes	(Throttling hole structure)
	130×800	A5 - Five rows sponge holes	V - With non-return valve
	130×1000	B30 - Suction cup type(suction cup dia.30mm)	(Ball valve structure)
	130×1200	B40 - Suction cup type(suction cup dia.40mm)	
	130×1400		

Selection-Standard type

Model/ Adsorption surface type	A1 - Single row sponge holes	A3 - Three rows sponge holes	A5 - Five rows sponge holes	B30 - Suction cup type	B40 - Suction cup type
TXM130×400-□	TXM130×400-A1	TXM130×400-A3	TXM130×400-A5	TXM130×400-B30	TXM130×400-B40
TXM130×600-□	TXM130×600-A1	TXM130×600-A3	TXM130×600-A5	TXM130×600-B30	TXM130×600-B40
TXM130×800-□	TXM130×800-A1	TXM130×800-A3	TXM130×800-A5	TXM130×800-B30	TXM130×800-B40
TXM130×1000-□	TXM130×1000-A1	TXM130×1000-A3	TXM130×1000-A5	TXM130×1000-B30	TXM130×1000-B40
TXM130×1200-□	TXM130×1200-A1	TXM130×1200-A3	TXM130×1200-A5	TXM130×1200-B30	TXM130×1200-B40
TXM130×1400-□	TXM130×1400-A1	TXM130×1400-A3	TXM130×1400-A5	TXM130×1400-B30	TXM130×1400-B40

Selection-With non-return valve

Model/ Adsorption surface type	A1 - Single row sponge holes	A3 - Three rows sponge holes	A5 - Five rows sponge holes	B30 - Suction cup type	B40 - Suction cup type
TXM130×400-□-V	TXM130×400-A1-V	TXM130×400-A3-V	TXM130×400-A5-V	TXM130×400-B30-V	TXM130×400-B40-V
TXM130×600-□-V	TXM130×600-A1-V	TXM130×600-A3-V	TXM130×600-A5-V	TXM130×600-B30-V	TXM130×600-B40-V
TXM130×800-□-V	TXM130×800-A1-V	TXM130×800-A3-V	TXM130×800-A5-V	TXM130×800-B30-V	TXM130×800-B40-V
TXM130×1000-□-V	TXM130×1000-A1-V	TXM130×1000-A3-V	TXM130×1000-A5-V	TXM130×1000-B30-V	TXM130×1000-B40-V
TXM130×1200-□-V	TXM130×1200-A1-V	TXM130×1200-A3-V	TXM130×1200-A5-V	TXM130×1200-B30-V	TXM130×1200-B40-V
TXM130×1400-□-V	TXM130×1400-A1-V	TXM130×1400-A3-V	TXM130×1400-A5-V	TXM130×1400-B30-V	TXM130×1400-B40-V

Technical parameters

Model	Max.theoretical suction force N (-30kPa)	Max.theoretical suction force N (-40kPa)	Max.theoretical suction force N (-50kPa)	Max.theoretical suction force N (-60kPa)	Weight kg V-with non- return valve	Blower connection port dia. mm	QTY of suction hole PCS
TXM130×400-A1	280	373	465	559	2.3	φ32	15
TXM130×600-A1	410	546	683	820	3.1	φ32	22
TXM130×800-A1	590	787	984	1,180	3.9	φ60	30
TXM130×1000-A1	690	919	1,149	1,379	4.6	φ60	37
TXM130×1200-A1	820	1,093	1,367	1,640	5.4	φ60	44
TXM130×1400-A1	951	1,267	1,584	1,901	6.6	φ60	52

TXM Series



Vacuum Gripper-Blower Standard Type

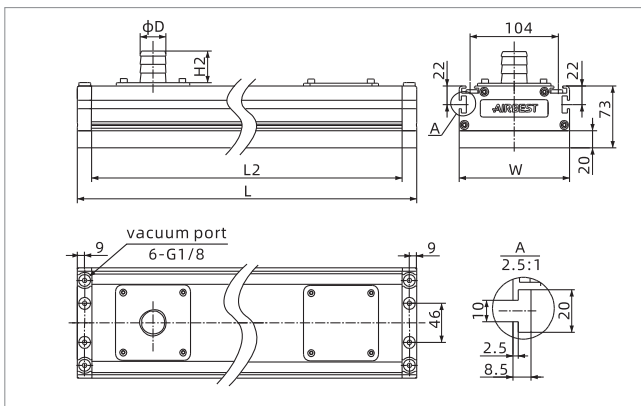
Technical parameters

Model	Max.theoretical suction force N (-30kPa)	Max.theoretical suction force N (-40kPa)	Max.theoretical suction force N (-50kPa)	Max.theoretical suction force N (-60kPa)	Weight kg V-with non-return valve	Blower connection port dia. mm	QTY of suction hole PCS
TXM130×400-A3	169	227	286	344	2.3	φ32	65
TXM130×600-A3	254	343	431	519	3.1	φ32	98
TXM130×800-A3	340	458	576	694	3.9	φ60	131
TXM130×1000-A3	426	574	721	869	4.6	φ60	164
TXM130×1200-A3	512	689	866	1,044	5.4	φ60	197
TXM130×1400-A3	598	805	1,012	1,219	6.6	φ60	230
TXM130×400-A5	170	226	283	340	2.3	φ32	108
TXM130×600-A5	255	340	425	510	3.1	φ32	165
TXM130×800-A5	335	447	558	670	3.9	φ60	220
TXM130×1000-A5	435	580	725	870	4.6	φ60	275
TXM130×1200-A5	505	673	842	1,010	5.4	φ60	330
TXM130×1400-A5	590	787	983	1,180	6.6	φ60	385
TXM130×400-B30	294	392	490	588	3.1	φ32	28
TXM130×600-B30	451	602	752	903	4.1	φ32	43
TXM130×800-B30	577	770	962	1,155	5.3	φ60	55
TXM130×1000-B30	735	980	1,225	1,470	6.2	φ60	70
TXM130×1200-B30	892	1,190	1,487	1,785	7.3	φ60	85
TXM130×1400-B30	1,029	1,372	1,715	2,058	8.8	φ60	98
TXM130×400-B40	432	575	722	867	3.3	φ32	23
TXM130×600-B40	658	875	1,099	1,319	4.6	φ32	35
TXM130×800-B40	883	1,175	1,475	1,771	6.0	φ60	47
TXM130×1000-B40	1,109	1,475	1,852	2,224	7.1	φ60	59
TXM130×1200-B40	1,334	1,775	2,229	2,676	8.5	φ60	71
TXM130×1400-B40	1,560	2,075	2,606	3,129	10.1	φ60	83

Vacuum gripper

- TXN
- TXD
- TXC
- TXM**
- TXP
- TXH
- TXL

Dimensions(mm)



TXM130×400(600-1400)-A Sponge type

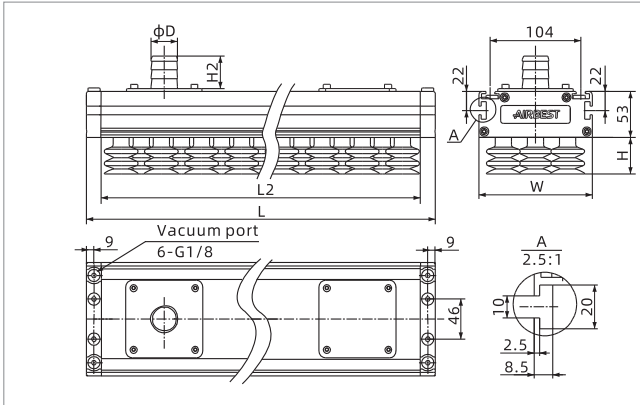
Model/Size	L	L2	W	D	H2
TXM130×400-A	434	400	130	33	40
TXM130×600-A	634	600	130	33	40
TXM130×800-A	834	800	130	61	50
TXM130×1000-A	1,034	1,000	130	61	50
TXM130×1200-A	1,234	1,200	130	61	50
TXM130×1400-A	1,434	1,400	130	61	50

TXM Series



Vacuum Gripper-Blower Standard Type

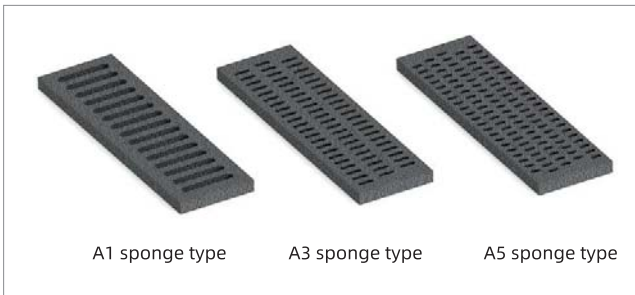
Dimensions(mm)



TXM130x400(600-1400)-B Suction cup type

Model/size	L	L2	W	D	H2	B30	H B40
TXM130x400-B	434	400	130	33	40	37	45
TXM130x600-B	634	600	130	33	40	37	45
TXM130x800-B	834	800	130	61	50	37	45
TXM130x1000-B	1,034	1,000	130	61	50	37	45
TXM130x1200-B	1,234	1,200	130	61	50	37	45
TXM130x1400-B	1,434	1,400	130	61	50	37	45

Spare parts selection(mm)



Sponge type



Suction cup type

Spare parts selection

Item	Model	Dimension mm
Sponge	TXC400-A1, TXC400-A3, TXC400-A5	434x130x20
	TXC600-A1, TXC600-A3, TXC600-A5	634x130x20
	TXC800-A1, TXC800-A3, TXC800-A5	834x130x20
	TXC1000-A1, TXC1000-A3, TXC1000-A5	1034x130x20
	TXC1200-A1, TXC1200-A3, TXC1200-A5	1234x130x20
	TXC1400-A1, TXC1400-A3, TXC1400-A5	1434x130x20
Suction cup	SPC30S	φ30
	SPC40S	φ40

◇ Note: Sponges are consumables in this product. Please replace it in time according to actual working conditions, otherwise, it will affect the adsorption effect.
Operating temperature: - 10 ~ 60 °C, do not contact with strong acid, strong alkali and other corrosive gas or liquid, do not contact with sharp objects.

TXP Series

Vacuum Gripper-Oval Shaped



PACKAGING

Features

- ◇ The housing is made of high quality stainless steel
- ◇ External blower is used for vacuum source
- ◇ Large inside area structure

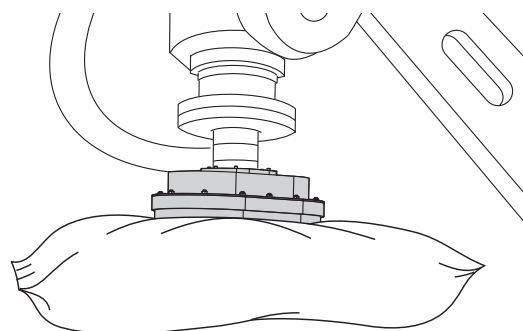
Advantages

- ◇ High strength, mainly used in high load working conditions
- ◇ Achieve stable and fast handling of products
- ◇ Maximize the suction force by increasing the adsorption area



Applications

- ◇ Mainly used for handling objects with large deformation, serious concave and convex surface and certain air permeability under high load conditions, such as flour bags, rice bags, cement bags and so on



Vacuum gripper

TXN

TXD

TXC

TXM

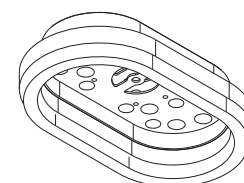
TXP

TXH

TXL

Structure

- ◇ The housing is made of stainless steel, and the flange mounting hole is reserved at the top
- ◇ Large area oval cavity structure design
- ◇ Foam rubber is used for adsorption with good sealing and long lifetime. The foam rubber can be purchased separately and replaced by users themselves



Flange mounting hole

Vacuum port

Adsorption surface

TXP Series



Vacuum Gripper-Oval Shaped

How to order

TXP 230×380 - A

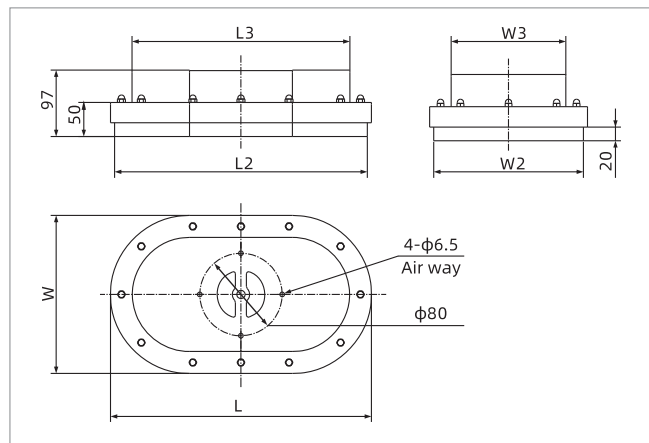
① ② ③

① Series	② Dimension	③ Adsorption surface type
TXP	190×290 230×380	A - Foam rubber

Technical parameters

Model	Recommended blower flow m ³ /h	Max.theoretical suction force N (-40kPa)	Weight kg	Recommended hose dia. of blower mm
TXP190×290-A	200	860	2.9	φ60
TXP230×380-A	200	1,440	4.0	φ60

Dimensions(mm)



TXP

Model/size	W	W2	W3	L	L2	L3
TXP190×290-A	200	190	132	300	280	236
TXP230×380-A	228	220	164	378	360	314

Spare parts selection

Item	Model	Applicable vacuum gripper
Foam rubber	TXP190	TXP190×290-A
	TXP230	TXP230×380-A

TXH Series

Vacuum Gripper-Heavy Load Type



UNIVERSAL HEAVY LOAD

Features

- ◇ Large area structure design
- ◇ Vacuum source can be built-in vacuum generator or external blower
- ◇ Suction cup type and sponge type are optional for adsorption surface
- ◇ Built-in non-return valve structure

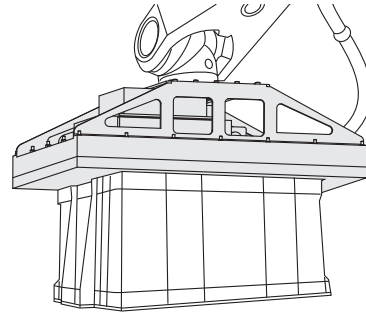
Advantages

- ◇ Large area adsorption structure, mainly used in high load working conditions
- ◇ Customers can select flexibly according to the actual working conditions
- ◇ Suitable for the handling of various industries
- ◇ It can meet the handling of different dimension workpieces



Applications

- ◇ Mainly used in heavy load sorting system, intelligent warehousing, stacking and unstacking, logistics, etc.



Vacuum gripper

- TXN
- TXD
- TXC
- TXM
- TXP
- TXH**
- TXL

How to order

①
②
③
④
⑤

① Series	② Dimension	③ Adsorption surface type	④ Vacuum source	⑤ Non-return valve
TXH	500×700	A - Sponge	Nil - Without vacuum source	V-with non-return valve
	800×1000	B40 - Suction cup	C - With external vacuum generator	
	1100×1300			

Selection

Model/Adsorption surface type	A - Sponge	B40 - Suction cup
TXH500×700-□-C-V	TXH500×700-A-C-V	-
TXH800×1000-□-V	TXH800×1000-A-V	TXH800×1000-B40-V
TXH1100×1300-□-V	TXH1100×1300-A-V	TXH1100×1300-B40-V

TXH500×700-A-C-V

Vacuum Gripper-Heavy Load Type



Features

- ◇ Large area handling, heavy load application
- ◇ Built-in large flow vacuum generator, fast reaction time
- ◇ Built-in non-return valve structure, which can meet the handling of various dimension workpieces
- ◇ The adsorption surface is sponge
- ◇ Mainly used in sorting system, stacking and unstacking industry

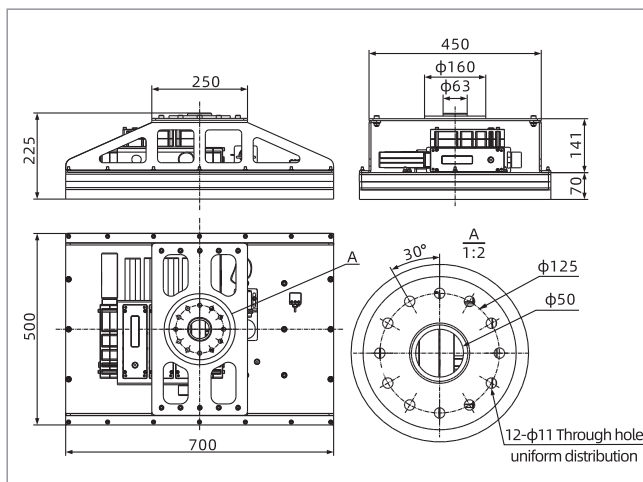


Technical parameters

Model	Rated air supply pressure bar	Max.vacuum level -kPa	Max.vacuum flow NL/min	Air consumption NL/min	Max.theoretical suction force N (-40kPa)	Mounting bracket	Weight kg	Recommended hose dia. mm Air supply port (P)
TXH500×700-A-C-V	6.0	85	3,710	2,300	1,440	with	36.5	φ16

- ◇ Note: 1. The detecting device includes 1 mechanical negative pressure gauge, 1 digital pressure gauge and 1 photoelectric inductive switch.
2. The data of theoretical suction force as above are figured out in the condition that the gripper is fully covered by rigid airtight workpieces without considering safety factor.

Dimensions(mm)



TXH500×700-A-C-V

Spare parts selection

Item	Model	Dimension mm	Applicable vacuum gripper
Sponge	TXH500×700	500×700×25	TXH500×700-A-C-V

TXH500×700-A-V



Vacuum Gripper-Heavy Load Type

Features

- ◇ Applicable for packaging and logistics industry, such as box handling, stacking and unstacking. High quality sponge fits the uneven surface perfectly with the performance of long lifetime and good sealing. The vacuum source is external blower. It is equipped with built-in check valve and reversing valve control unit for blower. The vacuum detecting switch and approach switch are equipped as well to provide convenience for automatic control systems

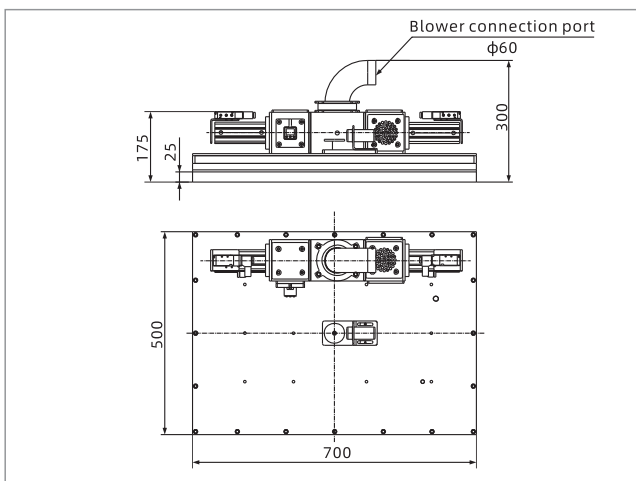


Technical parameters

Model	Max.theoretical suction force N (-40kPa)	Recommended blower flow m ³ /h	Working voltage of control unit V	Reverser for blower	Mounting bracket	Weight kg	Blower connection port dia. mm
TXH500×700-A-V	1,440	170	DC24V	with	without	36.5	φ60

- ◇ Note: 1. The detecting device includes 1 mechanical negative pressure gauge, 1 digital pressure gauge and 1 photoelectric inductive switch.
- 2. The data of theoretical suction force as above are figured out in the condition that the gripper is fully covered by rigid airtight workpieces without considering safety factor.

Dimensions(mm)



TXH500×700-A-V

Spare parts selection

Item	Model	Dimension mm	Applicable vacuum gripper
Sponge	TXH500×700	500×700×25	TXH500×700-A-V

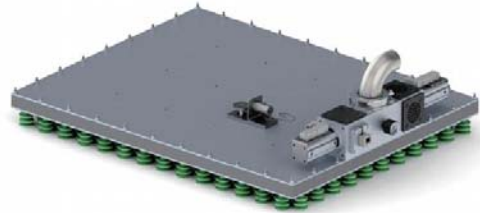
TXH800×1000-B40-V

Vacuum Gripper-Heavy Load Type



Features

- ◇ Applicable for packaging and logistics industry, such as box handling, stacking and unstacking. High quality sponge fits the uneven surface perfectly with the performance of long lifetime and good sealing. The vacuum source is external blower. It is equipped with built-in check valve and reversing valve control unit for blower. The vacuum detecting switch and approach switch are equipped as well to provide convenience for automatic control systems

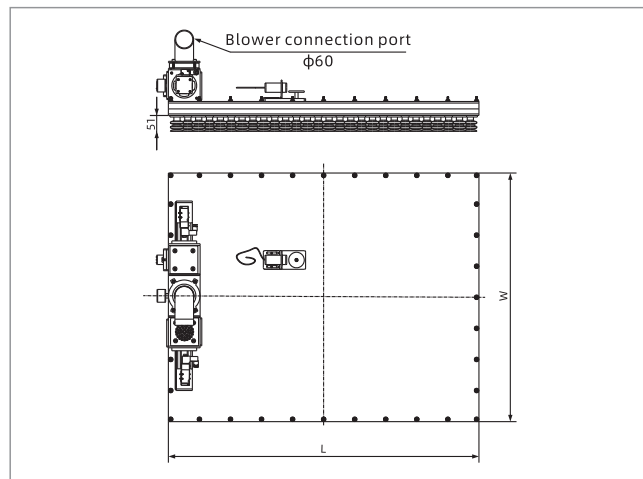


Technical parameters

Model	Max.theoretical suction force N (-40kPa)	Recommended blower flow m ³ /h	Working voltage of control unit V	Reverser for blower	Mounting bracket	Weight kg	Blower connection port dia. mm
TXH800×1000-B40-V	3,850	320	DC24V	with	without	56	φ60
TXH1100×1300-B40-V	5,200	520	DC24V	with	without	79	φ60

- ◇ Note: 1. The detecting device includes 1 mechanical negative pressure gauge, 1 digital pressure gauge and 1 photoelectric inductive switch.
- 2. The data of theoretical suction force as above are figured out in the condition that the gripper is fully covered by rigid airtight workpieces without considering safety factor.

Dimensions(mm)



Model/Size	W	L
TXH800×1000-B40-V	800	1,000
TXH1100×1300-B40-V	1,100	1,300

TXH800×1000-B40-V TXH1100×1300-B40-V

Spare parts selection

Item	Model	Dimension mm	Applicable vacuum gripper
Sponge	TXH800×1000	800×1000×25	TXH800×1000-A-V
	TXH1100×1300	1100×1300×25	TXH1100×1300-A-V
Suction cup	SPC40S	φ40	TXH800×1000-B40-V、TXH1100×1300-B40-V

TXL Series

Vacuum Gripper -Combined Type



UNIVERSAL

Features

- ◇ The product is of modular structure
- ◇ The housing is made of high quality aluminum alloy
- ◇ Built -in large flow vacuum generator and external blower are optional
- ◇ Suction cup type and sponge type are optional for adsorption surface
- ◇ Built-in non-return valve can be selected

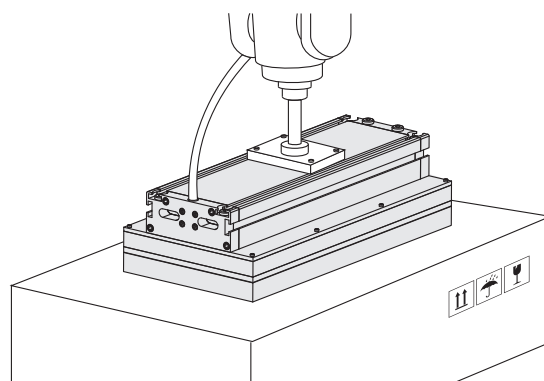
Advantages

- ◇ Different sizes can be combined freely
- ◇ High strength and light weight
- ◇ Fast reaction time
- ◇ Suitable for the handling of various industries
- ◇ It can meet the handling of different dimension workpieces



Applications

- ◇ Mainly used in the packaging industry, such as intelligent warehousing, intelligent logistics, stacking and unstacking, unmanned sorting, etc.
- ◇ With built-in non-return valve, it can be used to adsorb the workpieces with certain leakage, different sizes and different shapes
- ◇ Because of its light weight, it is very suitable for robots



Vacuum gripper

TXN

TXD

TXC

TXM

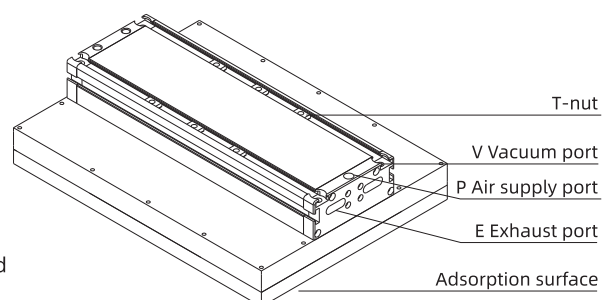
TXP

TXH

TXL

Structure

- ◇ The main body is made of aluminum alloy, with T-shaped slots on the front and side respectively, which can be used for installation or mounting of the inductive switch
- ◇ It is equipped with T-nut (M8 × 1.25-T5)
- ◇ The gripper has one air supply port (G1/4F) and six vacuum ports (6-G1/8F),direct exhaust from the side of the air supply end cover
- ◇ Built-in vacuum generator type and external blower type can be selected
- ◇ Non-return valve is optional



TXL Series



Vacuum Gripper -Combined Type

How to order

TXL 200×300 - A - C - V
①
②
③
④
⑤

① Series	② Dimension	③ Adsorption surface type	④ Vacuum source type	⑤ Non-return valve
TXL	200×300	A - sponge type	Nil-Blower type	Nil - Default, Without non-return valve (Throttling hole structure)
	200×400	B40 - suction cup type	C-Built-in vacuum generator	
	300×300			V - With non-return valve (Ball valve structure)
	300×400			

Selection-Vacuum generator type

Model/Adsorption surface type	A - Sponge type	B - Suction cup type
TXL200×300-□-C	TXL200×300-A-C	TXL200×300-B40-C
TXL200×300-□-C-V	TXL200×300-A-C-V	TXL200×300-B40-C-V
TXL200×400-□-C	TXL200×400-A-C	TXL200×400-B40-C
TXL200×400-□-C-V	TXL200×400-A-C-V	TXL200×400-B40-C-V
TXL300×300-□-C	TXL300×300-A-C	TXL300×300-B40-C
TXL300×300-□-C-V	TXL300×300-A-C-V	TXL300×300-B40-C-V
TXL300×400-□-C	TXL300×400-A-C	TXL300×400-B40-C
TXL300×400-□-C-V	TXL300×400-A-C-V	TXL300×400-B40-C-V

Selection-Blower type

Model/Adsorption surface type	A - Sponge type	B - Suction cup type
TXL200×300-□	TXL200×300-A	TXL200×300-B40
TXL200×300-□-V	TXL200×300-A-V	TXL200×300-B40-V
TXL200×400-□	TXL200×400-A	TXL200×400-B40
TXL200×400-□-V	TXL200×400-A-V	TXL200×400-B40-V
TXL300×300-□	TXL300×300-A	TXL300×300-B40
TXL300×300-□-V	TXL300×300-A-V	TXL300×300-B40-V
TXL300×400-□	TXL300×400-A	TXL300×400-B40
TXL300×400-□-V	TXL300×400-A-V	TXL300×400-B40-V

Technical parameters-Vacuum generator type

Model	Rated air supply pressure bar	Max. vacuum flow NL/min	Air consumption NL/min	Max. theoretical suction force N (-60kPa)	Weight (kg) V-with non-return valve	Recommended hose dia. mm	QTY of suction hole PCS
TXL200×300-A-C	6.0	710	230	415	4.1	1×φ10	126
TXL200×400-A-C	6.0	710	230	563	5.2	1×φ10	171
TXL300×300-A-C	6.0	1,050	345	646	5.8	1×φ10	196
TXL300×400-A-C	6.0	1,050	345	874	8.4	1×φ10	266
TXL200×300-B40-C	6.0	710	230	1,055	4.6	1×φ10	28
TXL200×400-B40-C	6.0	710	230	1,432	6.1	1×φ10	38
TXL300×300-B40-C	6.0	1,050	345	1,469	6.8	1×φ10	39
TXL300×400-B40-C	6.0	1,050	345	1,997	9.4	1×φ10	53

TXL Series

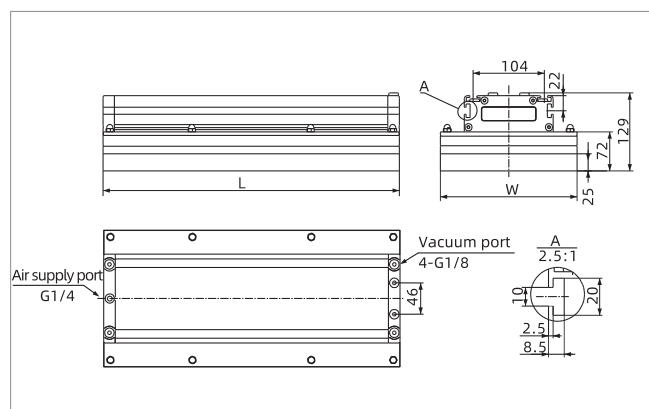


Vacuum Gripper - Combined Type

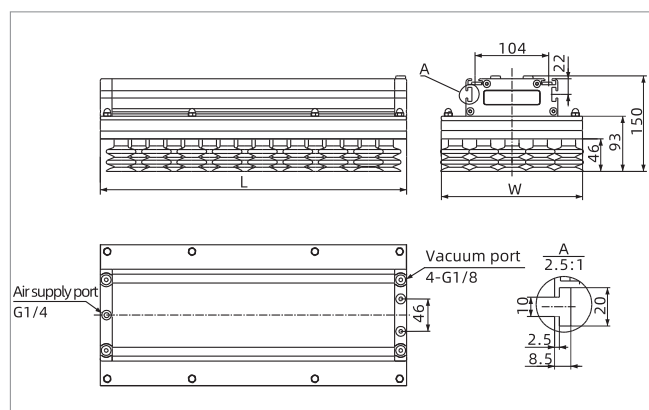
Technical parameters-Blower type

Model	Max.theoretical suction force N (-30kPa)	Max.theoretical suction force N (-40kPa)	Max.theoretical suction force N (-50kPa)	Max.theoretical suction force N (-60kPa)	Weight (kg) V-with non-return valve	Blower connection port dia. mm	QTY of suction hole PCS
TXL200×300-A-□	208	277	346	415	3.8	φ32	126
TXL200×400-A-□	282	375	469	563	4.9	φ32	171
TXL300×300-A-□	323	431	538	646	5.5	φ32	196
TXL300×400-A-□	437	583	728	874	8.1	φ60	266
TXL200×300-B40-□	526	701	879	1,055	4.3	φ32	28
TXL200×400-B40-□	714	950	1,193	1,432	5.8	φ32	38
TXL300×300-B40-□	733	975	1,224	1,469	6.5	φ32	39
TXL300×400-B40-□	996	1,325	1,664	1,997	9.1	φ60	53

Dimensions(mm)



TXL Sponge type



TXL Suction cup type

Model/Size	L	W
TXL200×300-A-□	300	200
TXL200×400-A-□	400	200
TXL300×300-A-□	300	300
TXL300×400-A-□	400	300

Model/Size	L	W
TXL200×300-B40-□	300	200
TXL200×400-B40-□	400	200
TXL300×300-B40-□	300	300
TXL300×400-B40-□	400	300

Vacuum gripper

TXN

TXD

TXC

TXM

TXP

TXH

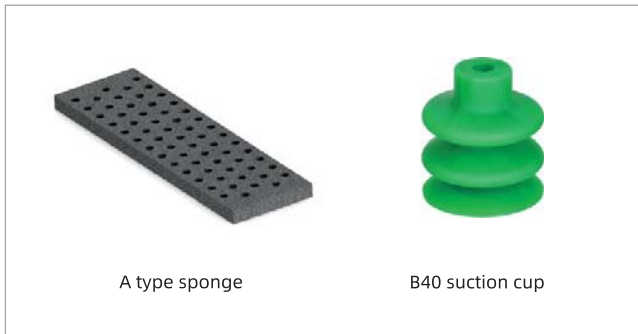
TXL

TXL Series

Vacuum Gripper -Combined Type



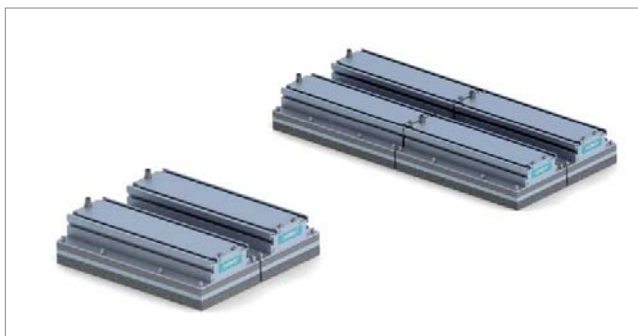
Spare parts selection(mm)



Spare parts selection

Item	Model	Dimension mm
Sponge	TXL200×300-A5	200×300×25
	TXL200×400-A5	200×400×25
	TXL300×300-A5	300×300×25
	TXL300×400-A5	300×400×25
Suction cup	SPC40S	φ40

Example of modular



Selection remark:

1. In the selection of gripper series products, it is necessary to carefully check the operating conditions, and select a suitable gripper model according to the different features of the grabbing workpiece.
2. In the selection manual, the gripper which is driven by vacuum generator, is required to use clean and dry compressed air.
3. In the selection manual, for the gripper products driven by the blowers, select a suitable model of the blowers according to the recommendation. All products in the selection manual do not include the blower, the blower has to be purchased by the customer separately.
4. The air supply pressure in the selection manual refers to the air supply pressure of the product under the operating condition. It is recommended that the fluctuation range of the operating pressure value is within $\pm 10\%$ of the air supply pressure standard value.
5. The theoretical maximum suction value in the selection manual is the recommended value calculated according to the theory of grabbing specific workpieces under the specific vacuum level. It is only the reference for the gripper selection, and not the only basis for grabbing any workpieces by the gripper.
6. All models of the products in the manual can only work under normal temperature and pressure. If there is a need for use in special environment (high temperature, high humidity, high oil pollution, high dust, corrosiveness, radioactivity, etc.), please contact the company's customer service for consultation.
7. All products in the selection manual have rated life. The rated life of each product is determined by the surface roughness, material, hardness, working condition environment, use frequency and other factors. Customers can contact the company's customer service according to the specific application conditions.
8. In order to prolong the operation life of the adsorption surface (sponge / rubber suction cup) of the gripper, it is suggested that the normal use method: when grabbing the workpiece, first contact closely the workpiece, and then open the vacuum; When placing the workpiece, first stabilize the workpiece, and then turn off the vacuum.
9. In order to improve product quality and customer experience, we will continuously improve the product, and inform customers of the update information in time.